

Stepping Up

For young people, parents, carers and professionals

Supporting your journey moving on from
early years through to adulthood...
guidance for families and young people with
additional needs.



Contents

	Page
Introduction	3
Young People’s and Parents/Carers’ Feedback	4
Preparation for Adulthood	6
Supporting Transition from the Earliest Stage Through to Adulthood at 25	8
SEND Thresholds	9
Transitions in Education - SEND Specific Information: EHCPs and SEND Thresholds	11
• Home to Nursery	13
• Early Years to Primary Education	14
• Primary to Secondary Education	15
• Secondary to Post-16 Education/Training/Work	17
• Post-16 Education to Employment or Higher or Further Education (16+ years)	19
• Pathways into Education, Training and Employment	21
• Transition to and from Alternative Settings	25
• Transition to Adult Social Care, Supported Living or Long-Term Employment (21+ years)	27
• Key Transitions in Healthcare (SEND Specific).....	29
• Key Transitions in Social Care (SEND Specific)	30

	Page
Useful Information and Where to go for Support	31
• Education, Employment and Training	32
• Independent Living and Social Care	35
• Health	41
• Community Inclusion	46
• Further Support	48
• SEND Support for Young People in Gateshead.....	49
Acronyms	50



Introduction

Our vision for Gateshead is for all children and young people with SEND to thrive, have appropriate provision, feel positive about their next steps and believe in themselves.

'We aim to put families at the heart of everything we do'

'The strength of Gateshead is the people of Gateshead'



From [Our aims - Gateshead Council - Thrive Approach](#),
People of Gateshead Pledge



Suzanne Dunn, Service Director for Education, Schools and Inclusion

Transition and change can be exciting, exhilarating and offer new experiences that can support our children and young people with additional needs to develop their skills, resilience and enjoyment of learning, encouraging them to positively explore their new environments. We heard from families, children and young people that this can also be a challenging time when they need the most support.

Moving schools, classes, teachers, staff or even getting into school each day can be part of a transition programme or plan depending upon the challenges this presents. Children and young people in care and/or in schools and residential settings outside of Gateshead Local Authority also have specific transition needs. Moving across and between services and negotiating the pathways into adulthood can also require specific knowledge and access to the right information at the right time in the right place for young people, families and professionals alike!

This guidance is for families and carers with children and young people with SEND from early years through to 25 years. It will also be useful for foster carers, child minders and professionals. It has been consulted on and put together by

families and young people, multi-disciplinary professionals and agencies across education, health, care, voluntary organisations, housing, leisure and employment services.

This is about planning for the future and making 'moving on' as smooth as possible. This document has 'tips', 'good ideas' and 'questions to think about' to help families, children and young people effectively navigate the various systems and services. Visits have been made to various educational settings to talk with children and young people about their experiences of change and what they would like to see happening to improve it. Families have responded to a survey led by the Parent Carer Forum which questions what is working well around transition, what is not working and ideas for the future.

We have set out some guiding principles that are best practice for every child and young person regarding transition. We also have very specific guidelines for those who have additional needs and require 'enhanced' support and guidance for those with complex needs who may require more specific support and intervention.

An important element, whether it is in the Early Years, Primary, Secondary or Post-16 stage, is the four outcomes of Preparation for Adulthood. These are Employment and Training, Community Inclusion, Independence and Good Health. These will be 'golden threads' throughout this guidance, with specific questions to ask young people on their journeys into adulthood and to raise at meetings and discussions.

Young People's and Parents/Carers' Feedback

The following are some of the quotes from children and young people who were engaged with this project:

There are really good things about change.....

- ... 'it may be fun, meeting new people, school trips to new places, you learn how to stick up for yourselves
- ... you might want a change
- ... there are new faces in the classroom
- ... facing new problems'.



What helps you when things change?

- ... 'talking to my family
- ... tell me what's happening so I know what to expect
- ... take deep breaths
- ... having a map of the new school
- ... visiting places before going to them
- ... people introducing themselves beforehand
- ... being on your own for a bit and not talking. Maybe write stuff down.'

There are some concerns though...

- ... 'I feel anxious because you won't know what to expect or what will happen
- ... I hate change because I used to move foster placement every week and it made me very anxious, stressed and confused
- ... you wouldn't give me a car without teaching me how to drive!'

However, some positives were....

- ... 'new options, new things to explore – you might end up liking it...
- ... I'd like to feel comfortable approaching jobs and starting something new. Build up my confidence
- ... it made it easier having a transition week before we started.'

They came up with a range of suggestions...

- I want to know straight away instead of getting moved without anything being said
- People introducing themselves beforehand
- Having a look around the new school first – I felt better seeing the school before I came
- People coming in to talk about the options – not just the college
- Go through the process and how to apply
- Having an 'off load' person to go to
- Trial runs and photographs of classrooms
- Strategies such as using a sketch or memory book or using fidget toys
- Maps – virtual maps

We have listened to what you have said and hope that this document supports you in your decisions...

From the parent/carer survey...

Parents/carers are sometimes very confused at the different pathways and options to choose. Some stated that they wanted easier ways to navigate the various services to make decisions, whilst others found the process smooth, flexible, bespoke, and supportive. Some parents said, 'it feels a bit like sink or swim' and those whose children have been out of the mainstream settings wanted the voice of the child at the centre of all the decisions being made. Many families wanted more support around the Preparation for Adulthood four outcomes so that their children could take an active part in their local community. The Local Offer was not always easy to use. It appears that the systems and access to the right information at the right time for them can be inconsistent.

They came up with a range of suggestions....

- I would like to know my rights and responsibilities as a parent
- Joint meetings with school and support services would be useful
- Help around the legalities of the EHCP on transition
- Early preparation with good information and communication
- The need for strong SEN support and knowledge of what is available in the next setting
- Having an inclusive school which is willing to make reasonable adjustments
- Positive relationships with parents and carers are essential.

We have listened to your concerns and ideas and we hope that this document supports you in making your decisions...

You may find Your Voice Counts, SENDIASS or another advocacy service can help to support you.



Your Voice Counts
www.yvc.org.uk



SENDIASS
www.barnardosendiass.org.uk



Other Advocacy Services
www.gateshead.gov.uk

What became clear from discussions with young people, families and professionals was the need for Key Principles that must be adhered to whatever the need, phase, stage or setting.

These are:

- **Person-Centred Planning:** Tailored transition plans based on individual strengths, aspirations, and needs. This keeps the voice of the child and young person at heart.
- **Multi-Agency Collaboration and Commitment:** Involvement of education (including education services), health (therapists and medical interventions), social care (including Early Help)

and families to provide **cohesive and consistent** wrap around support. The importance of effective transition meetings to prepare for the change and support the process in the new setting cannot be underestimated.

- **Family and Carer Engagement:** Effective **communication** channels enabling the active role of families in decision making, ensuring that they are well informed, have their voice heard and are supported.
- **Ongoing Review and Adaptation:** Frequent reviews of the young person's plan, updating it as their needs and circumstances evolve.

- **Emphasis on Skills for Independence, Resilience and the Preparation for Adulthood:** Focus on developing life skills, self-advocacy and resilience at every stage.
- **Ensure** that settings and services have '**an inclusive culture**' that recognises the individual needs of each child and makes reasonable adjustments to meet them.

Preparation for Adulthood

The move from being a child to growing into an adult is a significant change for all young people as they gain increased independence and make plans for the future. For young people with SEND, this transition is crucial. For families who have a young person with SEND, it can be an anxious and challenging time which needs more careful preparation and planning together than for other young people of a similar age.

If you are one of those parents/carers, you will have to start talking to your child about their wishes and aspirations. We begin to do this from the earliest years. Nursery staff, school staff, health workers and social workers will seek to understand your child's interests and aspirations and begin to encourage this right from the start. As your child approaches their teenage years, you will get to know new systems of support as your family moves from services for children, to those designed for adults.

Preparing for Adulthood (PfA) is about the focus on outcomes and taking steps to ensure that young people with SEND receive the right level of care and support to enable them to live as full and active an adult life as possible. The Preparing for Adulthood (PfA) programme sets out four main areas that young people with SEND say are important to them:

- **Employment, Education and Training**
- **Independent Living**
- **Community Inclusion**
- **Good Health**

These areas will start to be discussed as part of transition planning which usually starts in Year 9 (13 or 14 years old) with the annual review/transition review of a young person's EHCP. However, in Gateshead, we will discuss the four areas from the early years with children and young people with a range of additional needs, including those with an EHC plan. The SEND Thresholds describe the PfA outcomes from early years through to 25 under each of the SEND Code of Practice areas of need.



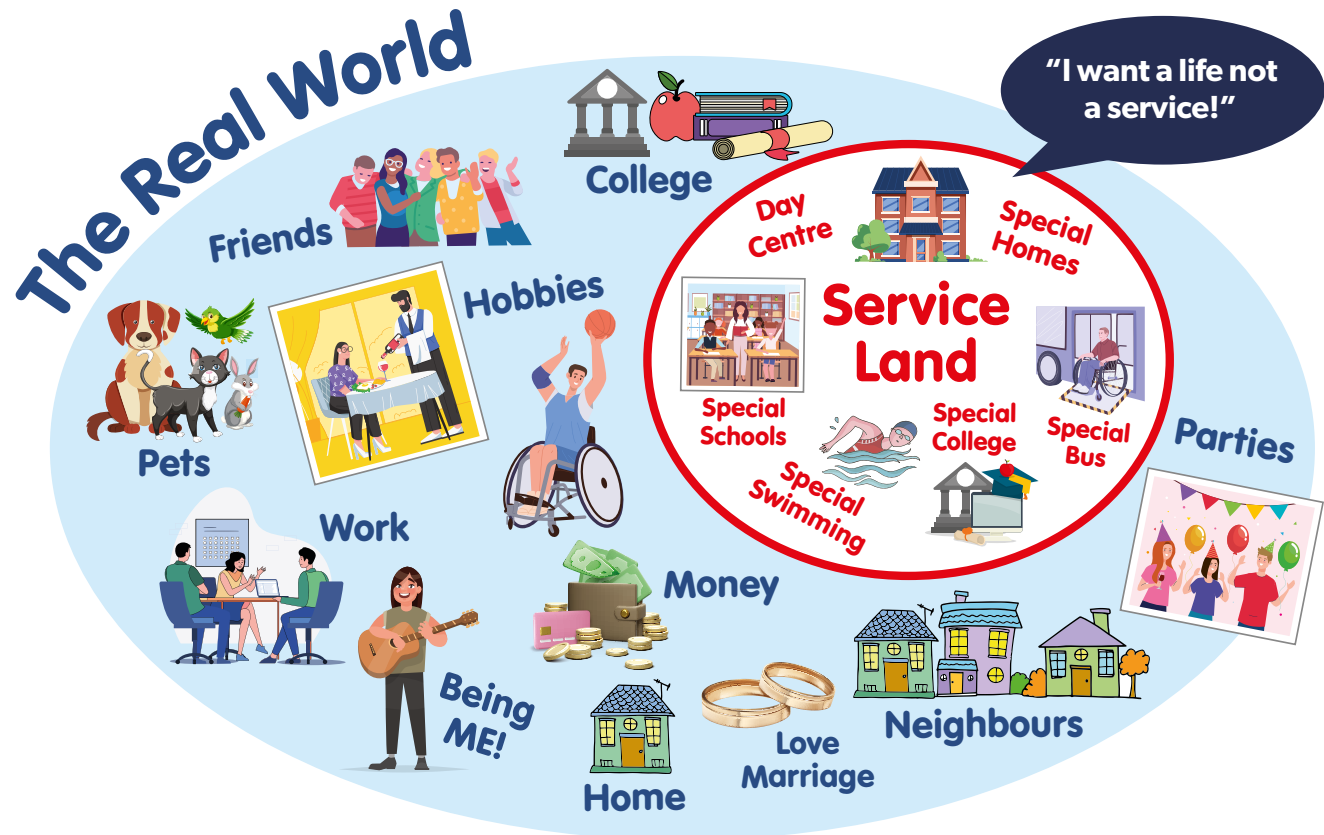
[Preparing for Adulthood: All Tools & Resources - NDTi](#)



[Emma's Views on Preparing for Adulthood - NDTi](#)



[SEND-Thresholds](#)



Young people have talked about practical activities and the need for support to:

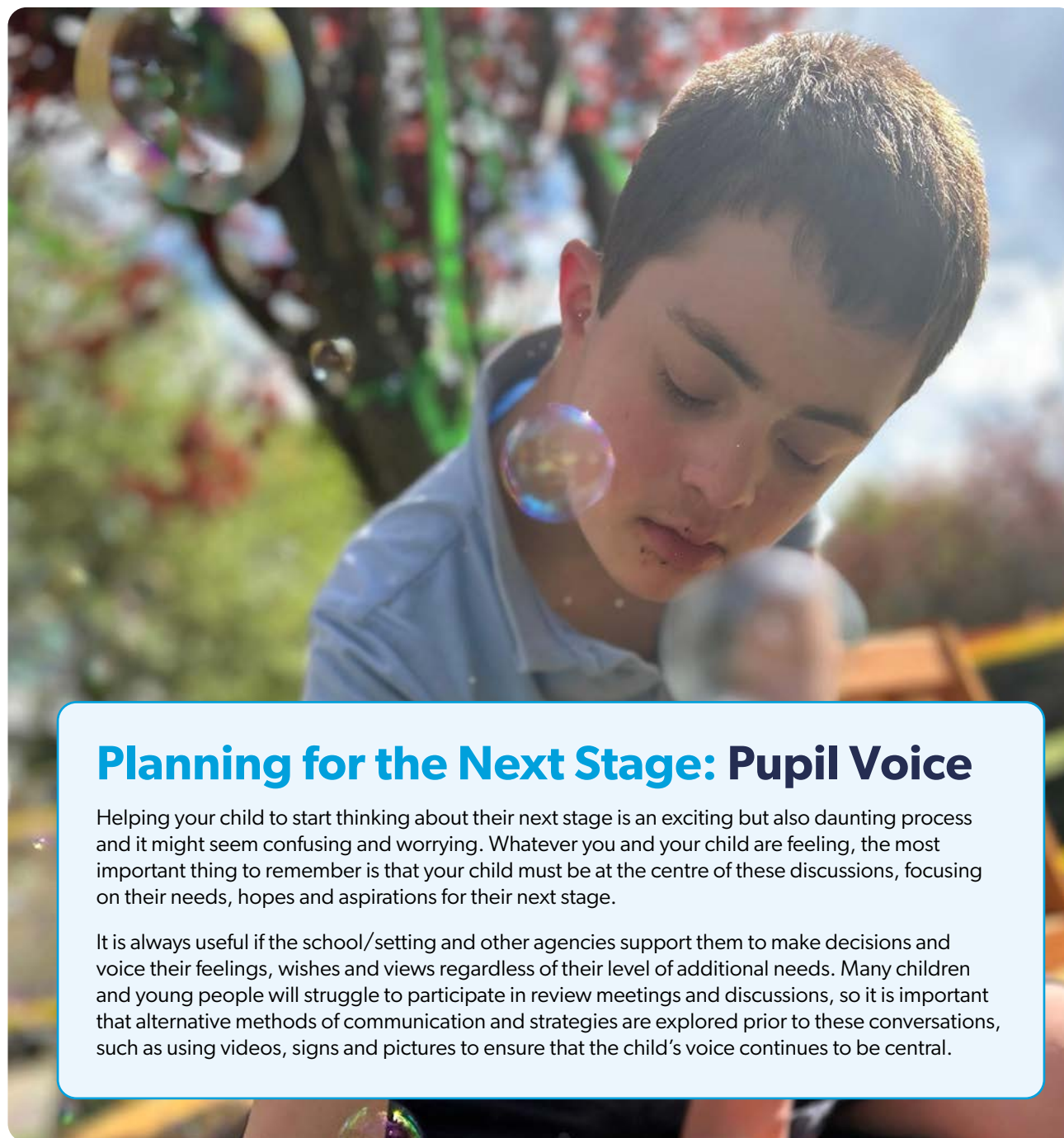
- help develop a lifestyle that is based on their hobbies, leisure activities, access to community facilities, meeting friends and having fun!
- help the young person participate in society, including activities, having friends, maintaining relationships and being part of and contributing to the local community and voluntary opportunities.
- choose a lifestyle that suits their interests and personal requests.
- travel independently.
- access continuing health care services so that young people understand which professionals may be supporting them into adulthood and annual health checks for people with learning disabilities.
- prepare for independent living, including where the child or young person wants to live in the future, who they want to live with, local housing options and what support they may need.
- understand the welfare benefits system, personal budgets, and direct payments.
- find a job and learn how to do a job through work experience or the use of job coaches.



[Ruth's Top Tips - brilliant meetings with young people](#)
[NDTi www.ndti.org.uk/resources](http://www.ndti.org.uk/resources)



[Listening to young children with disabilities](#)
www.ncb.org.uk/resources



Planning for the Next Stage: Pupil Voice

Helping your child to start thinking about their next stage is an exciting but also daunting process and it might seem confusing and worrying. Whatever you and your child are feeling, the most important thing to remember is that your child must be at the centre of these discussions, focusing on their needs, hopes and aspirations for their next stage.

It is always useful if the school/setting and other agencies support them to make decisions and voice their feelings, wishes and views regardless of their level of additional needs. Many children and young people will struggle to participate in review meetings and discussions, so it is important that alternative methods of communication and strategies are explored prior to these conversations, such as using videos, signs and pictures to ensure that the child's voice continues to be central.

Supporting Transition from the Earliest Stage Through to Adulthood at 25

There are many other transition points, such as moving classes, schools, changing teachers or other staff, changing services, moving house, changing taxis to and from school etc. These are equally important in a child's life and should be part of an individual plan considered with compassion, understanding and thoughtfulness.

However, this section looks at transition at **key and significant** points during a child's life. It has been written to reflect those children and young people who have additional needs who will need some 'enhanced support' at transition times and those who have more complex needs who will require specific and specialist interventions. These suggestions are to help families, young people and professionals to ask the **right questions at the right time**, to gain greater consistency of approach across all the transition points as the child and young person moves through their life.

These areas will be throughout this section:



Good ideas



Have you thought about?



Look it up



Check it out



Preparation for Adulthood - Things to Think About

In addition to this Transitions Guidance for families, Gateshead will be working with education, health and social care staff who will be developing guidance for settings and professionals in each phase to ensure that everything can be done to plan for and facilitate effective transition. Currently, there is a large review being undertaken by the Government of services and support for children and young people with SEND. Ofsted inspections are likely in the future to have an emphasis on inclusivity and transition with regard to all settings and provision.

Throughout the next section, reference will be made to the SEND Thresholds. They are only a 'guide' but families will find the descriptions useful in understanding the support that needs to be in place.

SEND Thresholds

Gateshead launched the SEND Thresholds in January 2024. These descriptors are based on national best practice in determining and describing the needs of Children and Young People (CYP) aged 0-25 with SEND. They are based on the four areas of the SEND Code of Practice (2015) – cognition and learning, communication and interaction, social emotional and mental health and sensory, physical and medical needs. A golden thread running through these four areas are the four elements of Preparation for Adulthood (PfA) – education and training, independence, good health and community inclusion. The SEND Thresholds provide:

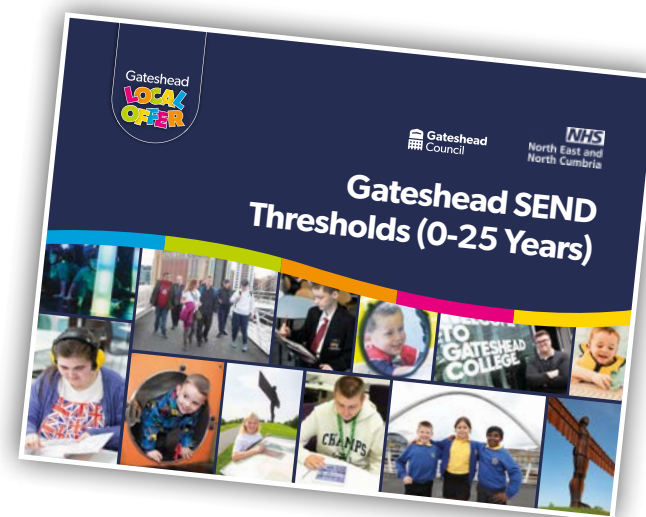
- a way of assessing the needs of children and young people
- suggestions on a wide range of interventions that can be used across services

- how to measure the impact and outcomes of the above

So, in terms of transitions, the SEND Thresholds will provide an essential framework for discussion and sharing information across and between services and settings for young people aged 0-25, on:

- a young person's needs
- interventions that have worked and those that have not
- ways of working and building on the current and future provision ensuring continuity and consistency of approach
- effective ways of sharing information

Thus, supporting effective transition and giving confidence to families and young people that their needs are fully understood.



Scan to view the SEND Thresholds
www.gateshead-localoffer.org

Explore each significant transition point for guidance, support and key information for transitions.

Home to Nursery

Page 13

Early Years to Primary School

Page 14

Moving to Secondary School

Pages 15 - 16

Secondary to Post-16 Education/Training/Work Pages 17 - 24

Transition to and from Alternative Settings

Pages 25-26

Moving to Adulthood

Pages 27-28

Key Transitions in Healthcare (SEND Specific) Page 29

Key Transitions in Social Care (SEND Specific) Page 30



Planning for the Future

Helping your child to start thinking about their future is an exciting but also daunting process and it might seem confusing and worrying. Whatever you and your child are feeling, the most important thing to remember is that your child/young person should be at the centre of these discussions.

All reviews, meetings/plans and decisions, whether they are to do with transition or not, should be person-centred and have your child or young person at heart. Hopefully, discussions about developing their independence, making friends and feeling positive about being in their local community are things that have been spoken and talked about from the earliest stages with staff from schools and other agencies. Whether the young person has an EHCP or is on SEN support, all reviews and plans should be centred around their needs, hopes and aspirations for their future. It is always helpful if the school and other agencies (for example, health, careers service, social care) support the young person in helping them to make these decisions and voice their feelings and views, regardless of their level of SEND.

Questions You Might Like to Discuss with Your Child

These are a list of suggested questions you might like to discuss with your child. It might be helpful to involve the people who know your child well, such as teachers, family and friends, leisure activity leaders, social groups etc. You can ask for an interview to be arranged with the school's career advisor to help you through this

- What does your child ENJOY?
Do they have any hobbies or interests?
- What sort of person are they? Do they:
 - like being with people?
 - like working with animals?
 - prefer being outside or indoors?
 - enjoy being creative/musical?
 - like working with their hands?
 - like order, detail or numbers?
- What is important to them?
- Do they like staying near home or being independent?
- Do they want to discover new places and people?
- Do they have ideas about what sort of work they would like to do?

One-Page Profile

A one-page profile is created by the child/young person in terms of what is important to them, about them and what kind of communication/support they prefer. Many schools and settings have one-page profiles/passports for children and young people as they easily share needs and ways of communicating in the young person's words what will be effective. These one-page profiles are person-centred tools to be completed with your child, together with the people who know them well.

The form is titled 'One Page Profile' and includes the following sections:

- My name:** A line for the child's name.
- INSERT PHOTO HERE:** A dashed box with a note: '(with permission from the young person and parent/carer)'. To the right is a speech bubble: 'What people like and admire about me... Ask the people who know the child - including friends and family, teachers and support workers - to say what they like and admire about them.'
- What's important to me...:** A box with instructions: 'Add a list of what really matters to your child so that someone who does not know them will understand what matters to them. This is from their point of view - even if others don't agree! It should be detailed and specific to your child. This section needs to have information about their whole life so that someone who doesn't know them can understand who they are. It is not a list of likes and dislikes but what and who is most important to them. This could include:
 - Information about how they live their life and daily routines
 - Who are the important people in their life - and how and when they spend time together
- How best to support me...:** A box with instructions: 'This should be a list of how to support your child. It is information that will help towards creating the best situation and outcome for them. It includes what people need to either know or do, so that they can help make their time more positive. It is best to be very specific so that if your child needs support quickly, someone will be able to plan the right support for them. It can include what is helpful and what is not.'



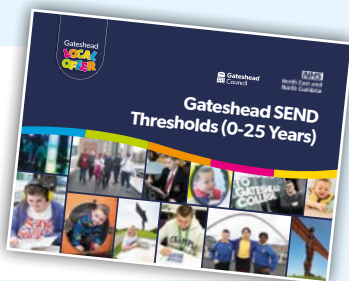
www.sheffkids.co.uk/resources/

Transitions in Education - SEND Specific Information: EHCPs and SEND Thresholds

Thresholds



Scan to view the SEND Thresholds



- **SEND Thresholds** – A ‘Graduated Approach’ to identify needs and interventions for children and young people who have additional needs.
- Those children and young people identified at **SEND Threshold 3** are usually at SEND Support. There needs to be a clear SEND Support plan which clearly identifies interventions that have been undertaken, the outcomes and the next steps. Resources within the settings normally cover the support that is required.
- Those children and young people who have significant needs – **SEND Thresholds 4** and above could have access to an Education, Health and Care Plan. This is a statutory legal document and there is an annual review of the needs. In terms of transition, the Local Authority ensures that the arrangements, including placements, are considered at the earliest stage to make any transition, from age 0 to age 25, as smooth as possible.

EHCPs

- There is a legal requirement for those who have an EHCP to have a transition review at Year 9 which should outline plans for the future, pathways, employment options, Supported Internships and the services that should be involved.
- The EHCP can be ceased if: paid employment has been taken up; higher education has been started; the young person turns 25, has moved to a different area or no longer requires the support.

Things to think about as a family/carer:

- The **SEND Thresholds** need to be referred to throughout the transition process and should be understood by all professionals. This ensures that the provision available in the current setting will be understood by the receiving setting and built upon.
- It is best practice that representatives such as the SENDCO attend any transition meeting to ensure that the right kind of information is shared. On transition from Primary to Secondary, it will be important that the Pastoral Leads are also included to ensure that tutor groups can be discussed and friendships maintained across the transition process.
- Transition discussions at Year 9 and Post-16 need to be informed by career services, Post-16 providers and other relevant services to support the Preparation for Adulthood outcomes.
- For some children and young people, a move to an alternative provision (AP) or a specialist provision is required if their needs cannot be met in mainstream. In these cases, the transition process should be the same as in any other setting. All services should be involved in the next stage.
- Some parents wish to educate their child outside the system to Electively Home Educate (EHE). Parents will need to discuss their child’s needs with the various services as some of these may not be available.
- Those children and young people who have access to Home and Hospital tuition due to their needs must have access to the services which they are entitled to.



Useful services and things to think about

Key Education Services

- **Portage** – supports families of children with additional needs at home and supports through transition into early years settings.
- **Early Years Team and Area SENDCO** – coordinates those early years services for children with additional needs. The team provides specialist SEND support to pre-school settings and through the transition into Primary.
- **0-5 Specialist Teaching Team** – this team provides advice, support and guidance to children in settings and supports the transition into Primary school.
- **High Incidence Needs Team** – this team provides advice, guidance and support to Primary and Secondary schools with four specialist teams – cognition and learning, social emotional and mental health, speech language and communication and complex social communication.
- **Low Incidence Needs Team** – this team provides advice and guidance for children and young people who have physical or sensory needs such as vision impairment, hearing impairment, multi-sensory impairment or physical disability.
- **Alternative Settings and Provision** – these are settings for children and young people who find it difficult to access mainstream education.
- **Specialist Provisions** – [Special Schools in Gateshead - Gateshead Local Offer SEND 0 to 25 years](#)



- **Specialist Provisions Out of the Local Area**
- **Additionally Resourced Mainstream Schools** – [Additionally Resourced Mainstream Schools \(ARMS\) - Gateshead Local Offer SEND 0 to 25 years](#)
- **Educational Psychologists** – work across Early Years to Post-16 advising and assessing needs, supporting settings and families through the formal assessment process and all the areas of the SEND Thresholds.
- The **Local Authority** have teams working with children and young people who are missing education, accessing Home and Hospital tuition and who are Electively Home Educated.
- **Learning and Skills, Careers, Gateshead Access to Employment Service (GATES), Colleges, Training Providers and Apprenticeships.**



Things to think about as a family/carer:



- Ask your settings about these services to see, if appropriate, whether it would be beneficial for them to be involved. The setting or school will need to access and refer.
- It will be important for these services to be involved in any transition process and/or meetings/plans.
- It will be pivotal there is effective communication between these services if there is one or more involved.
- If your child is transferring between settings – say from a mainstream school to an additionally resourced mainstream school, specialist provision, alternative provision or a specialist provision out of the borough, it will be important that all services come together to plan the transition process and ensure that the child/young person is aware of what is happening and has their say and views considered. Plans to return should be discussed at this point too and should be reflected in any plans and annual reviews of amendments to an EHCP if there is one.
- The transition Post-16 is a major hurdle in any young person's life, and the importance of the Preparation for Adulthood outcomes are pivotal to success. Careers advisers, whether at school or part of a contract with the Local Authority, are really important, and as a family it is a good idea to discuss the various options as young as 13 or Year 9 regardless of the level of additional needs.
- There are so many options, courses and routes/pathways available. It is so important that the young person/adult expresses their views in their own way and that they are listened to and their wishes acted upon.

A detailed pathway is available on pages 22 and 23.

Home to Nursery

Key Transition Focuses:

- Settling into a new environment where the family and child feels comfortable.
- Early identification of needs or emerging needs – involvement of Education, Health, Portage, and other multidisciplinary professionals as appropriate.
- Parental involvement – the key is communication and reassurance – home visits before placement are important.

Enhanced/Complex – Emerging Needs and Support

SEND Threshold 1-3

- A staggered approach can be helpful – building up hours incrementally.
- Involvement of Area SENDCOs and those services who specialise in low/high incidence needs who can offer transitional advice.
- Plan transitional meetings well in advance with visits planned by the family to the setting – where this is not possible settings could explore digital options such as a virtual tour or online Q and A.
- Families are given an induction pack for the new setting and have the opportunity to visit the setting whilst their child is in attendance.

Useful support at this stage

- Portage
- Early Years Area SENDCo



Preparation for Adulthood - Things to Think About

- Show a developing understanding of relationships and friendships, some feelings and emotions.
- Starting to interact and communicate, adapt to new environments and playing with other children.
- Starting to sit for a meal and snack times – taking turns sometimes...
- Comply with self-care routines.



Have you thought about?

- **Attending activities** at your local **Family Hub** may help prepare your child to start nursery.
- **The cost of the support** that you will get [free early education and childcare - Gateshead Council](#), timings of placement and any after-hours support.



Look it up

Parents should be able to access statutory documents including the SEND Policy and Practice from the setting website. What is their provision for SEND emerging needs – do they talk about reasonable adjustments? What is the Ofsted inspection report rating?



Check it out

- If you have a child minder, do they need to be involved in this process?
- Ensure that the Health Visitor has undertaken the 2-year check and that as a family you are aware of the outcomes.
- Local play groups and support for families in the Family Hubs.



Good idea

- Families practise the journey to the setting beforehand so they know about timings and transport.
- Settings provide photographs of the setting they will be attending i.e. classrooms, toilets and photos of staff.



[SEND Thresholds](#) - great resource to see what support your child might access.

Early Years to Primary Education

Key Transition Focuses:

- Early identification and support: early identification of SEND – through assessments, observations in the nursery/pre-school setting using the SEND Thresholds.
- Collaboration between Services: Multi-agency meetings involving parents, early years staff, health and social care professionals and the Local Authority Early Years and SEND Team where appropriate.
- Parental Involvement: Parents play a pivotal role in planning. Ensure that they are supported in doing this and advocating for their child's needs.

Enhanced/Complex – Emerging Needs and Support

SEND Threshold 1-3

- Smooth handover between the Early Years settings and services to the Special Educational Needs Co-ordinator .
- Visits to the Primary school, meetings with teachers and support staff to create a tailored Individual Transition Plan.
- Supportive learning environments with visual aids, structured routines and additional classroom assistants where needed, individual behaviour plans, communication preferences discussed with parents and previous providers where appropriate.

Useful support at this stage

- Early Years Area SENDCo
- Family Information Service – [Family Information Service and directory - Gateshead Council](#)



Preparation for Adulthood - Things to Think About

- Understanding the importance of being safe and potential hazards.
- Washing and brushing teeth.
- Developing interests and starting to travel to places with family and undertaking some tasks independently.
- Starting to understand health needs.
- Developing communication and social needs – starting to build friendships.
- Starting to engage in team games, cooking and some independent learning.
- Developing some friendship groups.



Have you thought about?

Weekend activities to promote independence – such as trips to the supermarket or meeting other families to encourage friendships.



Good idea

- Has the school got sporting activities or hobby groups which will stimulate interest and ideas?
- Can you support them either at school or in a local club?



Look it up

Check on the website of the various Primary settings for their SEND Policy, their Ofsted grade and their SEND information report – how do they spend their funding in terms of SEND Support and the funding from the Pupil Premium Grant?



Check it out

- Have you any other family members that could help?
- Any friends – network of parents in the school?



[SEND Thresholds](#) - great resource to see what support your child might access.

Primary to Secondary

Key Transition Focuses:

- Preparing for New Routines; The transition to a more structured and often a larger Secondary school can be overwhelming for students with SEND.
- Preparing for the demands of the curriculum. The need for the Primary and Secondary settings to work together around transition.
- Accessing the right support in the right place at the right time.
- Skills Building: Focus on building resilience, organisation and independence skills.

Enhanced Support

SEND Threshold 1-3

- Transition meetings involving young people, parents, Primary school staff, Secondary school SENDCO and external professionals – speech therapists, occupational therapists and school nurses.
- Multiple visits to the Secondary school with opportunities to meet teachers, observe lessons, and tour facilities.
- Development of an updated SEND Support plan for those who are on SEND Threshold 3 and above and an updated EHC plan for those who have one that aligns with the demands of secondary education.
- Buddy system or peer support groups to foster social integration alongside nominated person in the Secondary school for support.
- Using technology such as google classroom for children to meet their teacher and tutor group prior to admission.
- Modifications in the curriculum, environment, or resources to accommodate the specific needs – such as extra time, assistive technology.
- Discussions around prior achievement/barriers to learning. Can we adapt the curriculum? Will the setting make allowance for a reduced expectation on GCSE level accreditation etc? Where are the vocational pathways and support for enhanced careers advice?

Complex Support

SEND Threshold 3-5

- Specific therapeutic or behavioural intervention that address anxiety of challenges in adjusting to the new setting.
- An enhanced team of professionals – psychologists, learning specialists – to work on strategies to improve attention, social skills, and/or emotional regulation.
- In school support services – specialist teaching assistants or resource rooms/bases to manage more intensive needs.
- Due to the overwhelming nature of a large Secondary setting – what is needed to ensure that phobias are addressed around having to socialise, navigate the buildings at busy times, issues with eating in front of others – what reasonable adjustments are being made?



Preparation for Adulthood - Things to Think About

- Starting to understand social media and the challenges around this.
- Understanding the importance of leisure and hobby activities.
- Access to sleepovers and residential trips.
- Preparing for sex education and relationship building.
- Starting to build emotional resilience and skills for managing change and tackling new situations and experiences.
- Understanding the difference between healthy and non-healthy groups of food and cooking appropriately.
- Thinking about independent travel, work-related experience and taking control of health appointments.



Good idea

In the summer prior to the transition – spend some permitted time on the school's grounds familiarising yourself with the building and the local area.



Look it up

Ofsted Reports – any comments about inclusion and the outcomes for those children and young people with SEND?

Primary to Secondary *continued*



Things to Consider When Choosing a Secondary School:

Your child's view on where they would like to go and what they would like from their school are really important...think about:

- Would they like to go to the same school as friends/siblings?
- Is there a specialist sporting/curriculum area that they would want?
- Can they travel easily?
- Visiting the school – does it feel calm and welcoming? Is there plenty of space for group activities but also quiet spaces?
- Is the school accessible and what do the playground and break rooms look like?
- Do children with SEND make good progress? Are there any other children like my child attending the school?
- Do you have all the support agencies involved? How will you monitor and review your child's work?
- Is there a time out or quiet space/ how does my child communicate their needs particularly in respect of behaviour?
- Where are the destinations of young people with SEND and what is the support available?
- How will the school include my child on school trips?
- How are you going to communicate with me and with whom?



Check it out

- **Behaviour policies** – the school's tolerance to behaviour and their strategies to support behaviour and learning/communication needs.
- Suspensions and exclusions in the school.
- The homework expectations and the support available.
- The support for Careers and their knowledge of SEND.



- [Short Breaks - Gateshead Local Offer SEND 0 to 25 years.](#)

Gateshead has a short break offer which will give you information about respite opportunities.



Have you thought about?

- Can we adapt the curriculum? Will the setting make allowances for a reduced expectation at GCSE level accreditation etc? Where are the vocational pathways and support for enhanced and complex careers advice?
- Areas of work in which you are interested. Check out with your child and the careers lead in school.
- Are there any other qualifications at foundation level and/or entry levels 1 and 2?



[SEND Thresholds](#) - Great resource to see what support your child/young person might access.



Secondary to Post-16 Education/Training/Work

Key Transition Focuses:

- **Career Guidance and Vocational Skills:** This is a critical stage where career guidance, vocational training, vocational profiling and social skills development should be key components of the transition process.
- **Further Independence:** Transition towards greater self-management of learning and life skills, enhanced development of resilience skills and the ability to cope with challenges that lie ahead.
- **Preparation for Adulthood:** Independent living arrangements to be discussed, links with housing and community groups. Employment areas – Supported Internships, movement to paid and voluntary employment as well as social enterprise.

Enhanced Support

SEND Threshold 1-3

- For students who can move into higher education, support in applying to colleges/universities with disability support teams in place, including access to assistive technologies and extended time for assignments.
- For students moving into employment, strong links with supported employment services, job coaches, and schemes such as Supported Internships.
- Where appropriate, referrals to Adult Social Care to ensure that the individual is connected to Adult Health, Transitions Team, Social Care, and/or Housing Services.

Complex Support

SEND Threshold 3-5

- Ongoing support plans for young adults needing continuous assistance in living or working environments. This may include finding supported living arrangements, personalised job coaching and extensive community-based learning programmes.
- Collaboration between adult and children's social care, health services and employment agencies to ensure continuity of care and support – explore personal budgets and direct payments.
- For students with more complex needs, multi-disciplinary planning may involve social workers, housing officers, mental health professionals and continuing education providers to create a Personalised Life Plan that covers all aspects of independent living, health and employment.
- Are the Transitions Team involved?



Preparation for Adulthood - Things to Think About

- Development of independent living skills, such as cooking, budgeting, and accessing public transport.
- Continued participation in social activities and community engagement through local support groups, clubs, and accessible services.
- Moving onto employment, supported employment and/or voluntary social enterprise opportunities.
- Understanding the health pathway of services, including GP Health assessments.
- Understanding of healthy eating, creating good meals and keeping a healthy mind.



Good Ideas

- Young people and their support networks to visit a range of provisions and pathways to get a real feel and understanding of the offer.
- Having a mentor in the setting to support the young person through the pathways and through visits and discussions.
- There may be opportunities for dual placements between settings – the question is to ask!
- Some vocational programmes such as Supported Internships have a job coach who will support the young adult in the workplace and support the settings that they are in.



Look it up

- The **welfare benefits** for families and young people in terms of what is available to move towards more independent living and travelling.
- Explore **community-based learning programmes** and **vocational programmes**, including social enterprises



Have you thought about?

- **Travel arrangements** – independent travel - raise questions about supporting them to travel to the workplace.
- In some colleges they have **pre-Supported Internship training** – do you have knowledge of this?



Check it out



- **Short Breaks** - [Gateshead Local Offer SEND 0 to 25 years](#). Gateshead has a short break offer which will give you information about respite opportunities.



- Contact your local [Family Hub](#) to find out more about work placements, volunteering and employment opportunities available.



- **Funding opportunities**, links with the Department of Work and Pensions (DWP) and Citizens Advice on what is available and how to access these grants.
[Find government grants - GOV.UK](#)



- The support from the [GATES programme](#) and [Learning and Skills - Gateshead Council](#) (see explanation of Learning and Skills on page 33).

- Check out the **Mental Capacity Act ...**

The Mental Capacity Act relates to people aged 16 or over. People are assumed to have capacity unless a Mental Capacity Act assessment has deemed otherwise. Assessing mental capacity involves a two-stage functional test. The principles of the Mental Capacity Act are that those that lack capacity are empowered to make as many decisions for themselves as possible and that any decision made, or action taken on their behalf, is done so in their best interests. If a young person is unable to make their own decisions, their parents or carers can apply for a Court of Protection order to make decisions on financial and welfare matters after they reach 18.



SEND Thresholds - great resource to see what support your young person should have access to.



Post-16 Education to Employment or Higher or Further Education (16+ years)

Key Transition Focuses:

- **Independent Living and Work Skills:** Emphasis on skills needed to live independently or semi independently – managing finance, personal care and finding employment.
- **Planning for Adulthood:** A comprehensive approach to transitioning into adulthood, incorporating housing, employment, vocational profiling and healthcare planning.
- Understanding the hopes, wishes and aspirations of the young adult in terms of their resilience to tackle relationships and moving on to their next stage. This is also the case for the families in terms of supporting them with their child moving away and into independence.
- Consistency and continuity of services, transferring from children's to adult services.

Enhanced Support

SEND Threshold 1-3

- For young adults who can move into further or higher education, support in applying to further or higher education with disability support teams in place, including access to assistive technologies and extended time for assignments.
- For young adults moving into employment or Apprenticeships, strong links with supported employment services, job coaches and schemes like Supported Internships and pre-Supported Internships. Having an up-to-date vocational profile in place that is regularly reviewed.
- Where appropriate, referrals to Adult Social Care/Transitions Team to ensure that the individual is connected to Adult Health and/ or Social Care.

Complex Support

SEND Threshold 3-5

- Ongoing support plans for young adults needing continuous assistance in living or working environments. This may include finding supported living arrangements, personalised job coaching and extensive community-based learning programmes.
- Collaboration between adult social care, Transitions Team, health services, and employment agencies to ensure continuity of care and support – personal budgets, direct payments.
- For young adults with more complex needs, multi-disciplinary planning may involve social workers, housing officers, mental health professionals and continuing education providers to create a Personalised Life Plan that covers all aspects of independent living, health and employment.
- Transition Team involvement.
- Further education involvement.

Useful support at this stage

- Gateshead Access to Employment Service (GATES)
- Transition Team
- Careers Service



Preparation for Adulthood - Things to Think About

- Continue to develop independent living skills through appropriate study programmes.
- Ability to manage health appointments and interventions.
- Accessing work-based employment, Supported Internships and voluntary opportunities including social enterprise.
- Developing an understanding of financial independence.
- Programmes of support to facilitate community participation in accordance with the young adult's choices and levels of cognitive function.
- Ability to sustain and further develop appropriate relationships and friendships.



Good idea

Setting up a friend WhatsApp Group to stay connected and to meet up on a regular basis to share ideas and information.



Look it up

Local clubs and activities – does the Local Authority map these?

Are they available on the Local Offer?

Where are the local network groups?

[SEND activities directory - Gateshead Council](#)



Have you thought about?

- Joining a gym?
- Going on an exercise session with friends – running, walking?



[SEND Thresholds](#) - great resource to see what support your young person should have access to.



Check it out

- Check for **welfare benefits, allowances, and support for employment**. If young people are in care, there is a bursary which could be accessed in Further and Higher Education. NOTE: you can get a bursary if you are 16-25 and not in care.
- Ask **Careers Advisers** about pathways into employment and training.



- **Youth Forums** – such as the Gateshead SEND Youth Forum. Many groups are set up for young people with additional needs to share ideas and undertake social and leisure activities. Contact your [LA Engagements team](#).



- Contact your local **Family Hub** to find out more about work placement, volunteering and employment opportunities available. [Gateshead Family Hubs - Gateshead Council](#).



Routes and Pathways into Education, Training and Employment

As you can see, effective preparation for this stage will be really helpful. So, completing a Vocational Profile and discussing with Careers Services and other professionals will help you to decide the pathway that might interest you most.

Career Planning Tools

Vocational Profile

A Vocational Profile is a summary of the aspirations of the young people towards the world of work, whether this is paid or voluntary. It is a useful tool to discuss the skills that they have and those that they want to develop, the kind of environment that they would like to work in and the kind of activities that they would want to undertake. It gives the young person a powerful tool to help decide where best they would want to be and for those that are supporting them more information and insight as to exactly where to start!!

Here is an example of a vocational profile that can be used in Secondary and beyond. When moving into the next stage into work, this profile will be invaluable to the young person and seen as something that they need to have going forward.



[Vocational Profile MNS \(003\).pdf](#)

Employment Plan

An employment plan is similar to a vocational profile but is used by employers and the young person to discuss their needs and to plan the support within the setting that they are in. This employment plan is aimed to help you and your employer to talk about and agree things that might help you both whilst in the workplace. The changes or plans that you agree to help you at work are sometimes called 'reasonable adjustments'. Every person and every employer is different. This employment plan might not include everything you need but it is designed to be a helpful tool. You might want to add your own questions to it.

Example of an employment plan from South Yorkshire:



https://www.gateshead.gov.uk/media/44994/employment-plan/pdf/employment_plan.pdf?m=1741614145773

Careers Team

From Year 9 onwards, make sure you discuss with the school the Post-16 options available and start to visit further education (FE) departments, colleges, Supported Internships, training providers and voluntary opportunities. Schools and colleges should provide students with independent career advice and offer opportunities for taster sessions, work experience, mentoring and inspirational speakers/role models to help young people with SEND make informed choices and decisions about their future aspirations. If your child has an Education, Health and Care plan, their SEND Case Officer will also be involved with this process.



Get in contact with Gateshead Careers services Careers Information, [Advice and Guidance \(IAG\) - Gateshead Council](#)

Pathways into Education, Training and Employment

Apprenticeships

For many young people, apprenticeships can be a really positive route into permanent employment by providing structure, paid employment and training in the workplace.

To find an apprenticeship you can use:

- The Government website www.gov.uk/apply-apprenticeship
- College and Independent Training Provider websites
- The National Apprenticeship Vacancy Service, www.apprenticeships.gov.uk
- Gateshead Council On Point Apprenticeship services www.gateshead.gov.uk

Useful resources



Preparing for Adulthood: Event Resources - NDTi - www.ndti.org.uk



Routes into Work Guide - NDTi - www.ndti.org.uk



Preparing for Adulthood - Employment Guide - NDTi - www.ndti.org.uk

Supported Internships

Supported Internships are for young people with an Education, Health and Care Plan, however Gateshead Council Learning and Skills Supported Internship programme does not require you to have an EHCP.

It is a partnership between an education training provider, employer, family and young person and is designed to help a young person with SEND into paid work. It usually lasts a year with 1 or 2 days spent supporting life and functional skills and 3-4 days in a workplace environment. This is supported by a person called a job coach who supports both the young person and employer to make the placement successful and long term.

Some education providers offer a pre-Supported Internship Programme too.

For more information and advice, talk with your Careers Advisor.

Employment

There are lots of organisations who can help you find work. You may prefer to look for a job with a Disability Confident Employer, which is a government scheme that encourages employers to recruit and retain people with health conditions or disabilities.

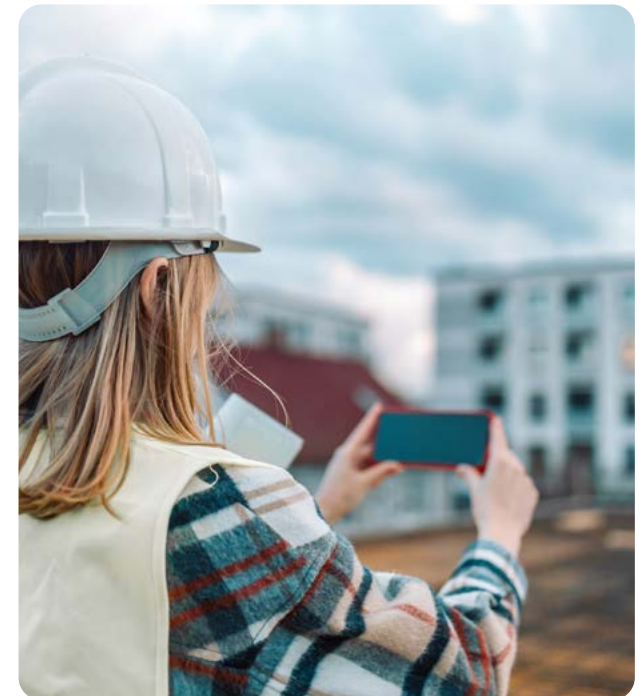
Organisations that can help you find work include:



GATES
www.gateshead.gov.uk



Gateshead Works
www.gateshead.gov.uk



Further Education

Local Authority Further Education

Learning and Skills offers a wide range of Apprenticeships, Supported Internships, Employability courses for young people with SEND, community learning and English and maths courses.



www.gateshead.gov.uk/learningandskills

Colleges

Colleges offer GCSEs, A'levels, T'levels and lots of vocational courses. They also have courses specifically for young people with SEND.

- **Gateshead College** offers **Project Choice** which supports young people with additional needs into the world of work and independent living. www.gateshead.ac.uk
- **Sunderland College** – College SEN Local Offer - www.sunderlandcollege.ac.uk
- **South Tyneside** – range of foundation learning and additional support – www.stc.ac.uk
- **Newcastle College** – range of foundation learning, additional support – www.ncl-coll.ac.uk/support

Independent Training Providers (ITP's)

These are private companies that provide training in a range of areas. The ones based in Gateshead are:

- **Optimum Skills** – Northeast training and apprenticeship provider. This provider has a number of hubs and provides young people with the skills and support to succeed in the construction industry.
- **ALD Hairdressing Training Academy** – ALD offers both non accredited and accredited vocational training in the hair and beauty industry for young people up to age 25 with SEND.
- **TRN Ltd** – This provider offers a range of apprenticeships, study programmes, pre-employment training and accredited online courses in construction, health and social care and business management.
- **FIRST** – First is a learning and development agency, empowering enterprise skills and entrepreneurship for Post-16 students, they can deliver workshops in schools/colleges and for Post-19 students, they deliver free accredited and informal enterprise courses.



Find out more at www.youarefirst.co.uk or fill in this [form](#)



Higher Education

Higher education is offered by colleges and universities and includes diplomas, foundation degrees, bachelor's and master's degrees, Higher Technical Qualifications and degree level apprenticeships. They are usually from level 4 to level 7.

You can apply to any university if you meet the entry requirements, and local universities include Sunderland, Northumbria and Newcastle University.



Good idea

- Visit lots of different education providers during year 11, 12 and 13 to get a really good idea of what options are available. They will really make you welcome and explain what is available to your child. Each provider has different strengths so think not just about the course but things like accessibility and transport, social life, personal safety, employment prospects, and extra curriculum activities.

- If your child doesn't yet know what career they want, focus instead on employment that can develop their interpersonal skills like teamwork, empathy, active listening, patience, responsibility, and motivation. Any work experience?
- Consider asking the school what careers advice is available for your child. You may then want to provide some additional support such as helping your child recognise the things they are good at and what they like doing.

Additional Help and Support

All the support listed below is variable depending on the type of course being undertaken, the age of the young person, and whether the course is full or part time.

16-18 bursary: A small weekly allowance that can pay for things like books, equipment, transport or lunch. It can be up to £1,200 a year depending on the young person's circumstances and benefits.

Childcare costs: Learners who have a child may be eligible for paid childcare for the duration of their studies. Each education provider manages their own budget for this, and it is a limited fund.

Travel costs: Learners can be entitled to some help towards their travel costs. However, there are strict rules on how much and who can apply, and some specialist travel costs should be paid by the local authority. Each education provider can advise you of their policy.

Essential textbooks and equipment: Learners can apply for funding to pay for books and equipment essential to their course. This can include things like a laptop, textbooks, tools, courses or specific clothing such as a uniform or overalls.

University bursaries, scholarships and awards:

Students in higher education can apply for money directly from their university or college on top of any other student finance. You do not have to pay this money back. Each university or college has their own rules about bursaries, scholarships and awards, for example:

- who qualifies
- how much you can get
- how to apply

Any money you get is paid directly to you by your university or college.

Talk to your student support service to find out what's available.

Gateshead also has a **supported employment forum** which is chaired by Mel Crosby. Membership consists of employees, voluntary organisations, schools, charities, young people and their families. It meets on a termly basis and has the best interests of young people with additional needs into employment as its heart.

Useful Websites and Contacts:



NDTI (National Development Team for Inclusion):

www.ndti.org.uk



Youth Employment:

www.youthemployment.org.uk/careers-hub/



National Careers Service:

0800 100 900

www.nationalcareers.service.gov.uk



World Skills UK:

www.worldskillsuk.org



BBC Bitesize:

www.bbc.co.uk/bitesize/careers



BASE (British Association for Supported Employment):

www.base-uk.org



Project Choice:

Gateshead College (Project Choice)

www.southtyneside.gov.uk



Young Disabled People in Employment - YouTube

Transition to and from Alternative Settings

Transitions for Young People in Alternative Settings

There are alternative settings and provisions that those young people with additional needs can attend if they present needs that cannot be met within a mainstream or specialist setting, or if parents request for their children to be educated out of the 'educational system'. In these cases, the transition process should be the same as any other setting with the values and principles being the same. Alternative provision should be an alternative educational provision and as such should be using the SEND Thresholds and exchanging information in line with any other provision. Services from health and social care should be involved in the next stage of planning support. This

applies to young people who are going into hospital and/or receiving home tuition. Those parents who have elected to educate their children at home will need to discuss with the various services their child's needs as some services may not be available.

Some children and young people have been or are out of any schooling. It is so important for these children and young people to contact the Local Authority on 0191 433 8745. There are children and young people with additional needs who have been educated and/or have lived and placed outside Gateshead. Effective transition for those young people is pivotal to their

next stage. Multi-disciplinary teams need to put in timely wrap around support for these young people to ensure that they 'move on' in the way that they would wish, and plans are in place to support them.



The [Virtual School](#) supports young people and their education who are in care. They support all transitions and are a key point of contact for families and young people alike.

Transitions for Young People who are Permanently Excluded

All Secondary young people that are permanently excluded are registered into River Tyne Academy or provided with an education directly by the Local Authority and placed on our educated other than at school (EOTAS) register until such time a placement at River Tyne Academy or a different mainstream school becomes available.

Each of the pupils has a referral document completed by the excluding school which also includes additional information such as attendance. If admitted into River Tyne Academy, they would initially meet with the parent(s) and young person and carry out assessments to formulate a package of support and a plan for integration. If the young person is offered education directly by Gateshead Local Authority

until a placement at River Tyne Academy becomes available, then Education Support would meet the parent and young person to discuss their educational needs, supported by the referral completed by the school and any additional information, and would formulate an educational package. The Education Support Service would share pertinent information with all allocated providers or tutors. The Education Support Service would then attend the admission meeting into any alternative provision with the parent and young person or meet with the parent, young person and any allocated tutor. Once a place becomes available at River Tyne Academy, The Education Support Service would discuss the young person with the provision and discuss their admission to River Tyne Academy with the parent and young person. River

Tyne Academy would then implement their admission protocols.

All Primary children that are permanently excluded are admitted into Eslington School. The Education Support Service would speak directly with the excluding school and share pertinent information with Eslington School. Eslington School would then contact parent(s)/carers to make arrangements for their child/young person to be admitted into the school with an appropriate integration plan.

Transitions for Young People in Out of Authority Placements

Transition should be the same whether the child/young person is within or outside the Local Authority so this guidance is appropriate. However, as distance and access to professionals may be an issue, it is important to ensure the following are in place:

- If the placement is in a residential special school, the young person will have an Education, Health and Care plan. It is important that this plan states from the earliest opportunity the processes of moving back home and to the local community. The school should put in arrangements from the beginning that this is an expectation and liaise with the relevant professionals to make this happen. The SEND Case Worker will be pivotal in all these discussions and the transition should be a key area in all the subsequent Annual Reviews. The Preparation for Adulthood should be an integral part of any plan along with vocational profiles, one page support plans and employment plans if appropriate.
- If the placement is for residence only, the above still applies. If the young person is attending a day school out of the authority as a result of the residential placement, then the above also applies.
- The key is that all relevant agencies are involved in partnership with the family and young person to make the transition back to Gateshead as smooth and effective as possible.



Transition to Adult Social Care, Supported Living or Long-Term Employment (21+ years)

Key Transition Focus

- Long-term care and independence: planning for adulthood where the focus is on maximising independence, social inclusion, ongoing support from health and the overall quality of life.
- Access to ongoing support: Ensuring that the young adult has access to consistent support networks, whether they are living independently, with family, or in supported living environments.
- Access to education, employment and training where appropriate plus developing hobbies and friendships.

Enhanced Support

SEND Threshold 1-3

- Transition into supported living arrangements with ongoing community support services.
- Development of independent living skills, such as cooking, budgeting, and accessing public transport.
- Continued participation in social activities and community engagement through local support groups.
- Access to adult education and Supported Internships or Apprenticeships, voluntary work etc.

Complex Support

SEND Threshold 3-5

- Complex care packages - where high levels of support are required, which may involve personal assistants, frequent health care intervention and specialist housing options.
- Transition to adult health services and development of a long-term healthcare plan including mental health and behavioural support.
- For employment, ensure that supported employment services remain available, along with job coaches and work/voluntary placements tailored to the young adult's needs and abilities.



PfA Ideas – Young People

- Continue to develop independence skills at their own pace and with the support of trained professionals.
- Understand the services that are available and how to access these across education, health, and care.
- Understand their rights.
- Able to understand and to make informed decisions with/ or without help about their lifestyles and personal organisation.
- Develop appropriate communication and interaction skills to interact effectively with others in the community and to make sound relationships and friends.
- Understand the risk around drugs, alcohol, and the challenges around social media in order to keep themselves safe.

Useful support at this stage

- Transition team - [Transitions-Team-Leaflet.pdf](#)





Good idea

- Setting up a friends' Whats App Group to stay connected and to meet up on a regular basis to share ideas and information.
- Setting up a buddy system with friends to take the young adult to social activities and facilities.



Look it up

The range of local and voluntary activities available in Gateshead and surrounding areas – look at what is happening in Newcastle, Sunderland, and South Shields too.



[Newcastle](#)



[Sunderland](#)



[South Shields](#)



Have you thought about?

- Joining a gym? Going on an exercise with friends – running, walking?
- If you have been educated out of your area, ensure that the relevant services know about you and your needs.



Check it out



- Check for welfare benefits including **Personal Independence Payment (PIP) allowances** (www.gov.uk/pip), and support for employment. Ask Careers Advisers and the Department for Work and Pensions (DWP) about pathways into employment and training.



- **Youth Forums** – many groups are set up for young people with additional needs to share ideas and undertake social and leisure activities. Contact your Local Authority Engagements team. [Young people's organisations - Gateshead Council](#)



- **HWG SEND Report 11-12-2024**. You can read here about the experiences of young people aged 16-25 with special educational needs and disabilities (SEND) in Gateshead as they transition from Children's Social Care to Adult Social Care services.

Key themes from their experiences were:

- **Individual Differences:** the specific needs of participants were highly individual, necessitating unique adjustments in order to provide suitable care and support.
- **The Importance of Communication:** participants reported inconsistent levels of communication, with some being unaware of available services.
- **Tailored Approaches:** feedback suggested a need for a person-centred, family focused approach to help young people with SEND receive clear communication and have agency in their care.

- **Ensure that your vocational profile and/or work plan is regularly reviewed and updated.**



Key Transitions in Healthcare (SEND Specific)

Useful Services for Healthcare

Children Services – The Community services include a variety of highly specialist, experienced and knowledgeable professionals working from early years to 19. All services work in partnership with each other.

Therapists – There are Speech and Language, Occupational and Physiotherapists available from early years to 19 years.

Medical – The Paediatric medical team, mostly community Paediatric consultants and staff will look after the majority of children and young people with SEND who have long term medical needs up to the age of 19. They will support and coordinate transition to either Primary Care and/or relevant adult services.

Gateshead Health also provides a 0-4 Autism Diagnostic Clinic.

Role of GPs – The General Practitioner should know the family well but not necessarily the details of the work of the consultants working with the child.

Children and Young Peoples' Service –

A single service to all children and young people aged 5-18 living in Gateshead who present with mental health difficulties and/or who may be living in difficult and challenging circumstances. Staff work closely with the transition and moving on strategies. The Active Transition coordinator may attend all transition meetings on the ['My Moving On Plan'](#).



Growing Healthy 0-19 Gateshead – Healthy Child Programme service is an integrated service for families, expectant mothers and children and young people to improve public health outcomes. This includes:

0-5 Service - The role of the 0-5 service is to protect and promote the health and wellbeing of children under five and their families.

5-19 Service – This team promotes and protects the health and wellbeing of children and young people aged 5 to 19 and up to the age of 25 with any child with additional needs.

Continuing Health Care - NHS continuing healthcare is the name given to a package of care arranged and funded solely by the NHS for a person aged 18 or over. It's designed to support people who have ongoing healthcare needs, outside of hospital care. This might be the result of disability, accident or illness.



Things to think about as a family/carer:

- There is a significant difference between children's and adult health services so be sure to ask in good time how you can access services that you currently receive.
- Is your GP fully involved with the services you access? Quite often they are not – ensure they are aware, particularly on transition.
- Those young people with a diagnosis of a Learning Disability can access health checks from their GP from 14 years.
- Ensure that the right health professionals are involved in transition meetings and/or send a detailed report.
- Think about preparing your child for visiting the health professionals – some children and young people find the environment challenging.
- It will be important that all the professionals understand the term 'only tell me once' so that families do not have to tell their story repeatedly.
- Understand the routes to get a diagnosis.
- Ensure that you attend appointments as some services take you off the list if there is not a valid reason for your non-attendance.
- Your Health Practitioner may be able to help you navigate these services – the key is the move from children to adult services. You will need to ask any provider Post-16/19 about access to some of these services particularly therapists who may not support Post-19 or have to be bought in by the provider or setting.

Key Transitions in Social Care (SEND Specific)

Useful Services

Family Hubs – Family Hubs provide walk-in support for families with children of all ages, including groups and activities for children aged 0-5 years and support for parenting, relationships and adult mental health. Family Hubs are co-located with a wide range of services and provide advice on managing a low income, social/peer support opportunities, holiday programmes and sensory facilities.

Personal Advisors – For cared for children and young people, at 16 years old, a Personal Advisor (PA) is allocated from the Leaving Care Team to co-work with the allocated social worker until the young person is 18. The PA remains involved until a young person is 21, or up to 25 where required.

The PA's role is to advise of care leavers' accommodation options, to assist the allocated social worker in formulating the pathway plan with the young person, to complete a 6 monthly review of their pathway plan and to advise of the young person's entitlements as a care leaver and ensure they are provided.

Early Help - Families with multiple needs can access help from a Family Intervention Worker where more intensive support is required to manage a safe, stable and healthy family life. Typically, families supported by a Family Intervention Worker will have received an Early Help Assessment (EHA) and a multi-agency support plan will be in place to help the family work alongside services in a clear, joined-up way.



[Start for life offer](#) - Useful information to give your child the best start in life.

Disabled Children's Team – Provides emotional and practical social care support to meet the needs of children who have substantial, long-term disabilities which have a profound impact on their lives.

Transitions Service - This team works with young people and their carers who are likely to need support from social care into adult services. They need to have a diagnosis - physical disability, mental impairment, learning disability/autism. The team will support that young person through the Preparation for Adulthood up to 25.

Adult Social Care – Adult Social Care supports people (and their carers) to stay independent and well so they can live the life they want. Our Adult Social Care teams are committed to helping people remain in their own homes and communities where they can continue to live independently for as long as possible. We work with you to ensure you have choice and control over how you can live your life, and to ensure that you continue to enjoy good health and wellbeing - [About Adult Social Care - Gateshead Council](#).



Virtual School – The Virtual School is responsible for promoting the educational achievement of children in our care, wherever they live or are educated. Education is central to all decision making and will feature in all care planning together with social workers, school admission officers, independent review officers, LA SEND Team and Virtual School Team. This service is also responsible for promoting educational achievement of those children previously in our care and providing information and advice to parents and others.

Things to think about as a family/carer:

- Understand what services as a family you will have access to – what are the thresholds to access any of these? This is particularly important when moving from children to adult services...are staff communicating with each other?
- Ensure that the relevant people come to your transition meetings – inform the school and SENDO.
- Have you a specific worker or someone you can talk to?
- Are you aware of all the options available to you and the various pathways – particularly in the Secondary to Post-16 pathways.
- In terms of children and young people with highly complex needs who have access to continuing care support – ensure you have all the physical and emotional support that you need.
- If your child is in an out of authority placement it will be important that all services are involved in meetings to re-engage your child back into your local community. The setting your child is in will have been planning this transition back since your child has started.
- Those young adults may need to enquire about access to voluntary work and social enterprises.

Useful Information and Support

Pages 32-34

Education, Employment and Training

- Education Support Service
- 0-5 Specialist Teaching Team
- Early Years Area SENDCos
- Psychological Service
- Portage
- Learning and Skills
- Virtual School
- Low Incidence Needs Team (LINT)
- High Incidence Needs Team (HINT)
- Gateshead Access to Employment Service (GATES)

Pages 35-40

Independent Living and Social Care

- Independent Living with SEND
- Housing
- Transitions Team
- Paying for Care
- Travel Support
- School Transport
- Public Transport
- Independent Travel
- Gateshead Transport
- Kinship Care
- Safeguarding
- Caregivers Connected
- Short Breaks for Children
- Short Breaks for Adults
- Disabled Children's Team
- Adult Disability Sensory Support
- Legal information
- Money – Personal Budgets
- Money - Benefits

Pages 41-45

Health

- Growing Healthy
- Physiotherapy
- Children's Community Nursing
- Paediatric Services
- Children in our Care Team
- Child Development Team
- Bladder and Bowel Service
- Mental Health
- CYPS and AMHS
- Social Prescribing
- Community Link Workers
- Sexual Health
- Therapy Services
- GP
- NHS Continuing Healthcare
- Paying for Healthcare Post-18
- Sexual Safety
- Drug and Alcohol Services

Pages 46-47

Community Inclusion

- SEND Activities Directory
- Gateshead Network of Children with Disabilities
- Leisure Centres
- Gym Possible
- Family Support
- Libraries
- Volunteering
- Youth Participation
- SEND Youth Forum
- Parent Carer Forum (PCF)

Pages 48-49

Further Services

- Citizens Advice
- Autism Hubs
- Family Information Service
- SENDIASS
- SEND Support for Young People in Gateshead

Education, Employment and Training

Education Support Service

The Education Support Service carries out a range of activities on behalf of the Local Authority and can help with essential information and guidance in a range of areas.

- Admissions - The Admission team are responsible for:
 - Placing children into Reception and Year 7 and in-year transfer requests
 - School consultations and pupil place planning
 - Requests for children to be placed outside their normal age group
 - Deferment of summer born children.
- Legal Intervention (attendance)
- Migration of children into and out of school
- Children Missing in Education
- Fair Access
- Elective Home Education
- Ethnic Minority and Achievement Service
- Exclusions
- Educated Other than at School (EOTAS)
- Pupils unable to attend school due to health needs

Please contact www.educationgateshead.org/education-support-service/ for further information and support.



0-5 Specialist Teaching Team

The Early Years Team provides advice, guidance and intervention for pre-school settings, including PVI's (private, voluntary and independent) as well as school nurseries, to support the needs of children who have a significantly greater difficulty in learning than the majority of others of the same age. The team supports settings in delivering on the four overarching principles shaping practice in Early Years settings within the EYFS statutory framework to promote the delivery of child specific inclusive practice.

Early Years Area SENDCos

Gateshead Council is committed to providing effective early identification and intervention for children with SEND. It is essential that all children with SEND have their needs identified as early as possible with the aim of providing early intervention to help remove barriers to learning.

The service promotes inclusive practice for children aged from birth to five and those children with Special Educational Needs and Disabilities (SEND) in order to ensure that all children are fully included within the setting. We work with settings to create a common understanding of the Code of Practice to help secure the best possible outcomes for children in their care.

Psychological Service

The Psychological Service has a dedicated team of Educational Psychologists, Trainee and Assistant Educational Psychologists and administrative staff. The service supports schools and families to ensure that all children, including those with special educational needs and disabilities, have the opportunity to fulfil their potential. The Educational Psychologists aim to raise attainment, promote emotional well-being and

achieve positive outcomes through the application of psychology to teaching, learning and behaviour.

Core Activities:

- We provide high quality assessment leading to outcome-driven Psychological Advice towards Education Health and Care Plans
- We offer rapid support for critical incidents and bereavement traded services
- We assess the needs of children with SEND and help school staff to formulate effective evidence-based interventions
- We deliver bespoke training for school staff, parents and carers
- We offer consultation, group work and therapeutic interventions

www.gateshead-localoffer.org/gateshead-psychological-service-2/



Portage

The Portage Service is primarily a home visiting, educational pre-school service for families with babies and young children who have Special Educational Needs and Disabilities (SEND). The service is accessed through the Gateshead 0-4 referral process. The majority of referrals are made by health visitors, however other colleagues within Health, Social Care, pre-school settings and parents/carers themselves can also refer.

The referral form can be found on the SENIT Portage page of the Education Gateshead website educationgateshead.org/senit-portage/

Portage aims to:

- Work with families to help them develop a quality of life and experience, for themselves and their young children, in which they can learn together, play together, participate and be included in their community.



- Play a part in minimizing the disabling barriers that young children face in accessing mainstream early years settings.
- Support the national and local development of inclusive services for children, who we will work with.

Portage Criteria:

- Pre-school children who have a significant delay in two or more areas of their development (or a diagnosis which may predict such difficulties).
- Pre-school children with the most significant developmental difficulties not accessing other pre-school provision will be given priority.
- Pre-school children who are experiencing difficulty with social communication and interaction.

Learning and Skills

Learning and Skills offers a wide range of Apprenticeships, Supported Internships, Employability courses for young people with SEND, community learning and English and maths courses.



www.gateshead.gov.uk/learningandskills

They offer specialist SEND provision for young people aged 16-25 and adults who have a learning difficulty and/or disability. They offer a range of courses within the curriculum based around the Preparing for Adulthood outcomes (PfA). Learners also have access to a range of personal development courses, that support learners to explore their hobbies and interests and gain new skills and knowledge. The Supported Internship Programme has a personalised study programme where they will develop new skills and, if applicable, gain qualifications. They will also have access to a work placement with the aim of achieving paid employment after a year.



For further information regarding all of these services and referral pathways please visit www.gateshead-localoffer.org.

Virtual School



Gateshead Virtual School (GVS) is responsible for promoting the educational achievement of children in our care, wherever they live or are educated. Education is central to all decision making regarding the welfare of children in our care and will feature in all care planning, together with our social care colleagues. Social workers, VS head, IROs, school admission officers and the Special Educational Needs and Disability (SEND) team will work together to ensure that, except in an emergency, appropriate education provision for a child is arranged at the same time as a care placement.

GVS is also responsible for promoting the educational achievement of those children previously in our care and providing information and advice to parents and educators.

Our services also extend to Gateshead children who are in our care but are residing out of borough.



www.educationgateshead.org

GATES – Gateshead Access to Employment Service

Gateshead Access to Employment Service (GATES) is Gateshead Council's Supported Employment offer, which is aimed at adults who have a learning disability and/or those who are neurodiverse. We support our clients to reach their personal goals and aspirations to gain and maintain paid employment in their local area.

We offer bespoke employment support and interventions to clients who may require additional in-work assistance, whilst also supporting employers to create a workplace of equality, diversity and respect for all.

Some clients have quite complex barriers to employment, and we are happy to work with everyone in a personalised way. If paid employment is more difficult to find for the individual, we can help source long term volunteer roles which enable the person to continue gaining skills for employment whilst seeking paid opportunities.

In September 2024, GATES began to work with young people in year 13 who are finishing their final year of formal education. During this final academic year, we will be supporting each student to gain valuable work experience in mainstream organisations. This is aimed at helping each individual to have the knowledge and confidence to make more informed decisions about what they would like to do when they leave school and at a later stage help them to navigate any employment decisions they need to make.

All clients are maintained with regular in-work reviews with employers, and we support with all aspects of employment, enabling success for each individual in their chosen field.

Referrals and Access

The individual needs to have a current Care Act assessment showing that they have 2 or more eligible criteria. The client also needs to be over the age of 18 years and be a Gateshead resident. Referrals are received from Gateshead Council Social Work teams.

School work experience placement referrals come from the school they attend and are individually agreed by the service.

Contact: 0191 433 6097, GATES@gateshead.gov.uk



www.gateshead.gov.uk/GATES

FIRST - Empowering Young People Through Enterprise



www.youarefirst.co.uk

FIRST delivers enterprise skills workshops for Post-16 students in schools and colleges, introducing them to the fundamentals of starting a business, the role of social enterprises and the value of embedding enterprise within their local communities. Through interactive activities, real-world case studies and tailored resources, we help students develop transferable skills and explore self-employment as a potential future pathway.

Our workshops are designed to be fully adaptable for young people with special educational needs or disabilities, ensuring an inclusive and supportive learning environment. Through interactive activities, real-world case studies and tailored resources, we help students develop transferable skills and explore self-employment as a potential future pathway.

For those aged 19+, FIRST offers free accredited and informal enterprise courses across the North East, funded by the UK Government and North East Combined Authority. These courses provide essential skills and knowledge to help learners explore business and self-employment. We ensure our training is fully accessible, with tailored support for people with physical and mental disabilities and those with additional learning needs.



To sign up or find out more complete this form:

<https://forms.monday.com/forms/4258b4c29fb1fb7543e81f37d8a6441e?r=use1>

Low Incidence Needs Team (LINT)



www.educationgateshead.org

The Low Incidence Needs Team (LINT) is part of the SEN Inclusion Team and includes the areas of hearing, vision, multi-sensory impairment and physical and/or medical needs, all of which provide support to pre-school children and young people in education aged (0-25) with sensory impairment in Gateshead. Specialist teachers and support staff hold the necessary mandatory qualifications in the areas of:

- Hearing impairment (HI)
- Vision impairment (VI)
- Multi-sensory impairment (MSI)
- Physical and/or medical needs (PMN)

LINT provide services which may include home teaching for pre-school children and teaching support for school-age children and young people, information and advice on a child or young person's sensory impairment or physical/medical needs and its implications, support with hearing/vision assessments and technologies, assistance with access to specialist equipment, teaching in sign language and braille if appropriate and supporting access to participation in leisure and social activities outside of school.



High Incidence Needs Team (HINT)



www.educationgateshead.org

The High Incidence Needs Team (HINT) is part of the Special Educational Needs Inclusion Team (SENIT) at Gateshead Council within the Education, Schools and Inclusion Directorate. The team provides advice, guidance and support to preschool settings, primary schools and secondary schools across Gateshead to meet the needs of children and young people with Special Educational Needs and Disabilities (SEND).

HINT has four specialist teams: Complex Social Communication; Speech Language Communication Needs; Cognition and Learning (for Specific Learning Difficulties); Social, Emotional and Mental Health Needs – which cover three of the four broad areas of need in the SEND Code of Practice: Communication and Interaction; Cognition and Learning; Social, Emotional and Mental Health Needs. For children and young people who have physical or sensory needs, such as vision impairment (VI), hearing impairment (HI), multi-sensory impairment (MSI) or physical disability, please refer to the Low Incidence Needs Team (LINT)

Children and young people do not need to have a diagnosis to receive support from HINT.

Please also note that HINT does not provide diagnoses.

For further information about HINT please see our service page on the Services for Schools North East webpage or click

<https://servicesforschoolsnortheast.org.uk/SENIT>



Independent Living and Social Care

Housing

There are a number of housing options available to young adults with SEND. Options will vary depending upon your individual circumstances, for example:

- Age
- Disability
- Assessed Care Act needs
- How much support you need
- Whether you want to live alone or with other people
- Which area you want to live

Plan ahead as much as possible. Find out what the housing options are in both the public and private sectors, and the advantages and disadvantages of each.



For more information visit www.councilfordisabledchildren.org.uk and read 'No place like home - a housing and support guide'.

For most people they can live independently without the need for formal support. Housing Support in Gateshead Council can support you up to 2/3 hours per week with managing your tenancy and home.



www.gateshead.gov.uk

If you need more support than that you need to request a Care Act assessment or call Adult Social Care Direct on **0191433 7033**.



www.gateshead.gov.uk
Initial care assessment request

There are a wide range of housing options including:

- A Council tenancy (house, apartment, including concierge schemes)
- A property through a Registered Social Landlord, they own lots of shared schemes and concierge provision
- A private let
- Home ownership
- Staying in the family home if it is adapted to meet your needs
- Shared Lives (living with a host family)
- A transition support scheme where you live for up to 2 years and learn new skills
- A shared house with overnight support, these are often known as Independent Living Schemes or ILS's
- Adult residential care.

If you only need minimal support (tenancy support or family support), you can apply to Gateshead Council to be placed on their housing register. In order to be considered for social housing you can fill in the application form online at:



<https://www.gateshead.gov.uk/article/309/Housing>

For general advice about these options email homechoice@gateshead.gov.uk or call **0191 433 5345** or visit:



www.gateshead.gov.uk/find-a-home

What Next

For more information about different housing options and a video to show you what is available, go to:



www.gateshead-localoffer.org
Independent Living Options

You can also:

- Talk to your social worker and family/carers
- Talk about it in your Education, Health and Care Plan review
- Ask if you can meet people who have already made the move to independent living and what their journey looked like and what was helpful to them for a smooth transition.



Transitions Team

The Transition Team works with young people and their carers who have received support from children's services and/or are likely to need social care support after the young person reaches 18. To be eligible for a referral, a young person will need to have an identified need for care and support under the Care Act (2014) due to either a Physical Disability, Mental Impairment, Learning Disability/and or Autism. Gateshead Council has a duty to provide after-care services to a young person as defined by s.117 Mental Health Act 1983 (as amended 2007) and where a young person is in receipt of such services.

As part of the transition, a Transitions Team representative currently attends all year 9 & 12 EHCP reviews for those young people who attend specialist provision, are open to our Children with Disabilities or Children in our Care teams. Mainstream/Virtual Schools can contact the team requesting attendance at any planned Yr9 or Yr12 reviews where it is felt that the young person is likely to require adult social care services post-18, where they can provide information and advice regarding preventative, universal and specialist services. They attend information events at specialist provisions, signpost to health colleagues and offer information around self-referrals for a transitions assessment to those who may have eligible, adult care and support needs, but who are not currently open to Children's Services.

If the young person meets the criteria for adult services, then from 16+ years old or before, depending on the

needs of the young person, the Transition Team will be available to provide the young person and their parents/carers with general information and advice about adult services. They will work in partnership with the young person's Children's Social Worker or other professionals involved in their care to ensure that the young person has a smooth, well-managed transition into adult services.

As part of completing an assessment, the Transitions Team will adopt a strengths-based approach which will focus on what a young person can do, rather than what they can't do. The team will look to explore ways to support a young person's well-being, resilience, psychological and emotional needs whilst considering how to support and promote independence and positive risk taking.

The team focuses on:

- Active involvement of young people and their families in the planning and decision-process concerning their future.
- Raising aspirations for young people through a focus on key areas such as transition, employment, independent living, community participation, relationships, health and wellbeing.
- Providing information and advocacy when required to ensure that young people are able to express their views and are supported to take part in decision making.



[Transitions-Team-Leaflet.pdf](#)



Independent Living Options

Because of the need for additional considerations, young people with SEND should be encouraged to think about where they might live in the future as part of their transition planning from Year 9 onwards.

This may seem like a very early time to start; however, it is important that young people and their families have good information from the beginning of the transition to adulthood process, so that support needs are assessed individually, and possible options are explored and understood.

The Year 9 annual review (or transition review) is a good opportunity to get information from professionals about housing options so an understanding of what may be possible for young people with SEND is developed. Discussions should include where they would choose to live in the future - with friends, on their own or with a partner?

As they get older and your child's transition plans develop, help them think about becoming independent adults and how they may eventually want to move out of the family home. Some young people may already receive direct payments or a personal budget, which can be used to help prepare for living as independently as possible.



www.gateshead.gov.uk

Paying for Care Post-18

The young person may have to pay for some of the services they receive as an adult. This will depend on their income and how much help they need. They will be asked to complete a financial assessment, and their Transition Worker can give them advice and support with this.



www.gateshead.gov.uk

Travel Support in Gateshead

Local Authorities must make free of charge travel arrangements (usually a subsidised free travel permit via Nexus bus company) to facilitate the attendance at school of eligible children resident in their area.

A child is eligible if they are:

- Compulsory school age (5-16) and attend their nearest qualifying school
- Live more than the statutory walking distance from that school
- Could not reasonably be expected to walk because of their special educational needs, disability or mobility, even if they were accompanied by a parent
- Would not be able to walk to school safely (unsafe route) even if they were accompanied by a parent

There are extended rights to free travel to school for children from low-income families.

For the travel permit application please click or scan on link below.

Post-16 transport - Local Authorities do not have a duty to provide free travel support for young people of 6th form age (16-18) in education or training. You can find Gateshead's Post-16 statement by clicking or scanning the link below.

In summary you/your child must:

- Be attending the nearest provision that can meet need
- Have undertaken a travel training assessment that confirms they are unable to travel independently (this excludes children with mobility issues)
- Be attending a full-time study programme



www.gateshead.gov.uk

Independent Travel

Independent Travel Training is about giving young people the skills and confidence to travel safely in the community and on public transport, expanding their knowledge of road safety and how to plan journeys. This is a key skill in preparing young people for adulthood for those that are able. This usually starts when young people reach Year 8 or 9 in school, however we have travel trained young people from Year 6 upwards depending on the complexity of the journey. Travel Training can open up lots of new opportunities for young people, making them less

reliant upon others, supporting friendships and will help them to explore opportunities for college, training and employment in the future. **To find out if your child is eligible for this support email your enquiry to traveltraining@gateshead.gov.uk.**

Click or scan to watch this short film which shows some success stories of our Gateshead learners and why schools strongly support the model.



www.gateshead-localoffer.org

Transport for Children with Additional Needs

School Transport

In summary you/your child must:

- Be attending the nearest provision that can meet need
- Have undertaken a travel training assessment that confirms they are unable to travel independently (this excludes children with mobility issues)
- Be attending a full-time study programme

Post-16 transport - Local Authorities do not have a duty to provide free travel support for young people of 6th form age (16-18) in education or training. You can find Gateshead's Post-16 statement by clicking or scanning the link below.



www.gateshead-localoffer.org/transport/



[Adult's All Day Concessionary Travel Pass](#)



[Children's Concessionary Travel Pass](#)



[Under 16 Pop card](#)



[Metro Gold Card](#)

Public Transport www.nexus.org.uk

Disabled children aged five to 16 and adults 16+ who live in Tyne and Wear should apply for an **Adult's All Day Concessionary Travel Pass**, a **Children's Concessionary Travel Pass** or an **Under 16 Pop card**. If you travel by Metro, you could also apply for a **Metro Gold Card**.

- **If you are travelling on bus** – use your All Day Concessionary Travel Pass to travel free of charge all day every day.
- **If you are travelling by Metro, the Shields Ferry, or on the Newcastle to Sunderland Northern Rail service** – use your Metro Gold Card to travel free of charge all day every day.
- **If you are travelling on Northern Rail services between Newcastle and Metrocentre/Blaydon** – use your Under 16 Pop card to travel at concessionary child fares.

Kinship Care

What is Kinship Care?

Kinship Care is where children whose parents are unable to look after them are cared for by other adults who are connected to them, including grandparents, other relatives, or other adults who have a relationship with or connection to the child. These carers are often referred to as 'kinship carers' or 'connected persons'.

If children's services have concerns about a child's safety and wellbeing, they may consider alternative caring arrangements for them. This can be for a variety of reasons and can be permanent or temporary.

The parent(s) of the child will be asked to nominate someone to be assessed to look after their child. Sometimes the arrangement is made by the Local Authority but more often it is arranged within the family network.



www.gateshead.gov.uk

Support for Kinship Carers

All kinship carers will receive support through regular home visits from their supervising social worker. The social workers and our family advocates will provide practical help and advice as well as emotional support.

Kinship Carers will have access to:

- One to one support
- Support groups
- Essential and additional training to support caring for the child
- Activity days for the whole family

Carers will have the opportunity to take part in consultations regarding our service delivery to ensure it is meeting the needs of Kinship Care families in Gateshead. Carers can request support when they need it as the child they care for grows up.



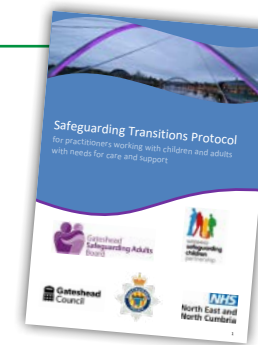
www.gateshead.gov.uk

Safeguarding



[Transitions Protocol November 2024 V2.pdf](#)

This protocol sets out the arrangements for young people aged 17 years and above, whose circumstances may mean that safeguarding adults procedures would apply when they turn 18 and who are not covered within the Transitional Safeguarding Guidance (Ages and Stages). This would be young people who would meet the definition of an 'adult at risk' when they turn 18.



Caregivers Connected



caregiversconnectedgateshead.co.uk

The Caregivers Connected service offers support to caregivers and young carers caring for someone residing in Gateshead.

A young carer is someone under 18 who helps to look after someone that they live with who is ill, disabled or misuses drugs or alcohol.

We can offer caregivers and young carers:

- School drop ins
- Fun activity days
- Emotional support and counselling
- Carer ID card for school
- Information, advice and guidance
- Benefits advice
- Adult and young carer assessments
- Parent carer needs assessments
- Wellbeing funds
- Peer support groups
- A volunteer service

- Skills and training workshops for adult caregivers and young adult carers
- Outreach activities for young adult carers

You can contact Carers' Federation directly or be referred by a professional. Call 0808 8010350, 07740410314 (text or WhatsApp) or email info@caregiversconnectedgateshead.co.uk.



Short Breaks for Children

[Short Breaks Service Statement.pdf](#)



Short breaks give disabled children and young people the chance to spend time with friends, experience exciting and fun activities, and develop new skills and independence. They also give parents and carers a break from their caring role and time to recharge their batteries. This used to be called “respite”.

Short breaks come in all shapes and sizes. They can be a break for a child away from their family or can involve supporting families to take a short break together, away from the routine of daily life. Short breaks could last a few hours, a day, evening, overnight or longer. They could take place in or away from the family home.

There are a wide range of short breaks available in Gateshead. Over the past few years, we have invested additional funding to make sure that all disabled children, including those with the most complex needs, can access community-based short breaks alongside non-disabled children. We use service providers who are experienced in working with disabled children and make sure that each child gets the level of staff support they need to have a safe and enjoyable experience.

Examples of short break services available in Gateshead include:

- Out-of-school clubs
- Youth clubs at evenings and weekends
- One-to-one support from short break workers

- Family-based breaks provided by Home from Home carers and specialist childminders
- Overnight stays at our residential short break unit [Grove House](#)



The type of short break you receive will depend on your child’s assessed needs. Referral processes and eligibility criteria apply.

The Social Care section in [FIS online Local Offer search](#) also holds up to date detailed information about the short breaks on offer in Gateshead, including eligibility criteria.



All initial enquires and referrals should be made to the Referral and Assessment Team on 0191 433 2653.

Short Breaks for Adults

[Short Breaks Service Statement.pdf](#)



The Short Break Service provides short breaks for people with a learning disability that live at home with their carers and breaks for carers who have an assessed need for a break from their caring role.

A short break can either take place in the person’s home, within the community or specialist buildings. The allocation of breaks people are entitled to each year are agreed as part of a care plan, following an [assessment of your needs for adult social care](#) and based on personal circumstances.



Everyone makes a financial contribution towards the cost of their short break, how much depends on individual circumstances.

If you think you or someone you care for needs a break, contact the Short Break Coordinator on **0191 433 2653** to discuss.

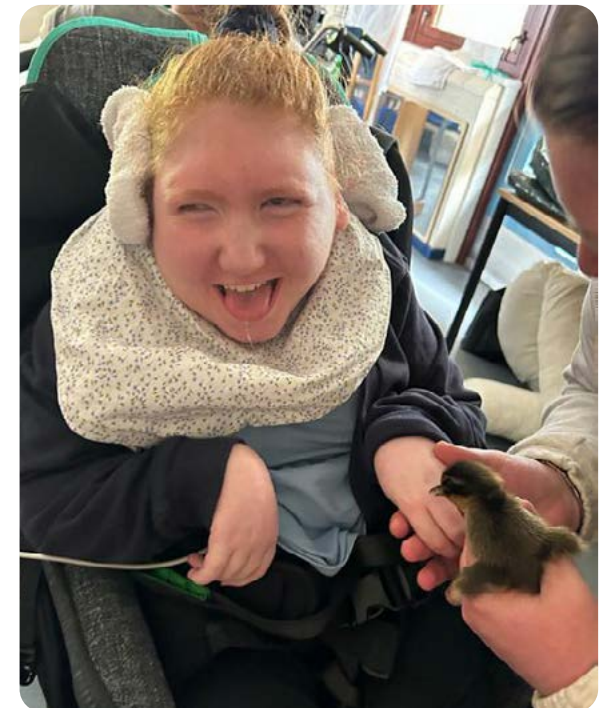
Types of Short Break

Blaydon Lodge

This specialist two bed short break service in Blaydon is for adults with learning disabilities/autism who may present behaviour that can be considered challenging. They may have been assessed as requiring 1:1 or 2:1 support. The service is staffed by Gateshead Council.

Shared Lives

[Shared Lives](#) is a care service that provides short-term breaks for adults with additional needs in the homes of Shared Lives carers across the borough. Shared Lives carers are self-employed and are recruited, assessed and trained by Gateshead Council.





Disabled Children’s Team (DCT)

www.gateshead.gov.uk



The Disabled Children’s Team (DCT) provides emotional and practical social care support to meet the needs of children who have substantial, long-term disabilities which have a profound impact on their lives. Our vision is for families with disabled children to have the support they need to live ordinary lives as a matter of course.

The services we can provide to families of children and young people with disabilities assessed as a ‘child in need’ include:

- Short breaks - during the day or overnight
- Support to enable a disabled child to access community-based leisure activities
- Support in the home with the care of a disabled child
- Support to access adaptations and special equipment

The team works closely with other services for disabled children to ensure families experience a joined-up service.

Adult Disability and Sensory Support

Find out more about things like support for living in your own home, getting out and about, or employment and volunteering.

www.gateshead.gov.uk



Money – Personal Budgets

Personal budgets are a different way for disabled children, young people and their families to get support. They offer flexibility and choice for you and your child. Instead of receiving services directly from Gateshead Council, you get money to buy the support you need. This is called self-directed support.

A personal budget (previously known as an individual budget) is an amount of money that the Local Authority thinks is needed to deliver the additional support that a young person with SEND support needs. A personal budget can be given in 3 different ways:

- **Direct payment** - where a young person or their parent/ carer receives funding to purchase services in the Plan.
- **Notional budget** - also known as a commissioned service and no money changes hands. The LA, school, college or health team holds the funds and purchases the support in the Plan.
- **Third party arrangement** - the direct payment is managed by an independent organisation, such as a voluntary organisation, on behalf of the young person or their parent/carers.

A personal budget can involve one of these or any combination of them. The aim of Personal Budgets is to give people greater choice and control over the support that they receive.



www.gateshead.gov.uk



Scope.org.uk

You can find more detailed information about eligibility, where funding comes from, how direct payments work and how you can request a personal budget if you are eligible [here](#).



Money – Benefits

Benefits for the young person and their family

As a parent/carer, you can claim benefits if you care for a child with complex needs until they reach the age of 16. From the September after your child’s 16th Birthday, you’ll only be able to get payments for them as a dependant if they’re in full-time education or on an approved training course. Once your child reaches 16, they may be able to claim certain benefits in their own right. This could have an impact on your household income, as certain benefits will reduce if your child is no longer classed as a dependent. For information on how your benefits might be affected, contact a specialist benefits advisor – for example, from Citizens Advice.

In some cases, young people with disabilities won’t be able to manage their own benefit payments and will need an appointee (usually their parent or carer) to help them.

Disability Living Allowance

If you’re a parent or carer of a child with a disability, you can claim Disability Living Allowance (DLA) for your child until they turn 16.

Find out more about Disability Living Allowance (DLA) for children on GOV.UK.



PIP - Personal Independence Payment

Once a disabled person turns 16 and wants to claim a disability benefit, they’ll need to apply for Personal Independence Payment (PIP).

PIP has replaced DLA for working-age adults and young people (aged 16 to State Pension Age) with a disability.

Find out more about Personal Independence Payment (PIP) on GOV.UK.



Legal

Citizens Advice Gateshead offer free impartial, confidential advice.



Growing Healthy Programme

[Growing Healthy 0-19 Gateshead | HDFT Children's Health Service](#)



The Growing Healthy Gateshead 0-19 Healthy Child Programme service is an integrated service for families, expectant mothers, children and young people that offers interventions from the pre-natal stage up to the age of 19.

The role of the 0-5 service is to protect and promote the health and wellbeing of children under five and their families.

The 5-19 team promotes and protects the health and wellbeing of children and young people aged 5 to 19 and up to the age of 25 for any child/young person with additional needs.

There is a dedicated SEND team within the 0-19 health services which is commissioned by Public Health via Gateshead Local Authority. This team offers support and advice in relation to children and young people with special educational needs who require more support than the offer provided by the Public Health school nursing team. The 0-19 team do not have special needs health visitors within their team. All preschool children with special needs are part of a health visitor's caseload and all school aged children with special needs are part of the specialist community public health nurses' (SCPHN) caseload.

The SCPHNs have overall responsibility for a caseload within a cluster of schools in each locality in Gateshead; this includes SEND provision. The 0-19 SEND mixed skill team support the delivery of intervention to those specific SEND groups and are accountable to the SCPHN.

Schools access a schools-based immunisation team via NHS England which is commissioned and provided via Sunderland. This team works in collaboration with school staff to share information regarding SEND, and the processes are adapted appropriately to meet the needs of the individual to ensure they are having their health needs met.

Physiotherapy

Children's (or paediatric) physiotherapy is the treatment and care of babies, children, and young people from birth to 19 years providing a programme of exercises, activities and other treatments to help improve movement, strength and co-ordination. Physiotherapists assess for, and recommend, specialist seating, standers and walkers to ensure effective postural management and allow children to enjoy their environment. The physiotherapy team also run regular orthotic clinics supported by an Orthotist. Children and young people must be registered with a Gateshead GP. Referrals can be made by Health Professionals.

Children's Community Nursing

The Children's Community Nursing Team aims to prevent and shorten hospital admissions for all children aged 0-19 years of age who have a Gateshead GP by promoting Family Centred Care. They provide nursing care to children within Gateshead aged between 0-19 years for children who may have acute or chronic health care needs which require a nursing assessment or intervention. Referrals can be made by health and education professionals.

Paediatric Services

The Paediatric medical team, mostly community Paediatric consultants and staff will look after the majority of children and young people with SEND who have long term medical needs up to the age of 19. They will support and coordinate transition to either primary care or relevant adult services. This may include adult Neurologists and other specialties. Some young adults with very complex needs require coordinated transition within tertiary specialties, often based at Newcastle.

Referral to the Paediatric services will be made by a GP, another doctor or health professional and the child must have a Gateshead GP. Please see the Paediatric referral guidelines on the attached document. Children and young people up to the age of 16 (18+ with SEND) can be seen in the following clinics:

- **General Paediatric clinics**, where common childhood conditions are seen
- **Specialist clinics**, some with a multidisciplinary team available. The specialist clinics include:
 - Community clinics
 - Epilepsy clinic
 - Neurofibromatosis (NF1) clinics
 - Gastroenterology, including coeliac disease and constipation
 - Feeding clinics (hospital and special schools)
 - Chronic Fatigue Syndrome and medical problems in eating disorders
 - TB service

Children in Our Care Health Team

Every child has an initial health assessment (IHA) which should take place within 28 days of them coming into care. This is usually carried out in hospital by a paediatrician.

If a child or young person remains in care, they will have a review health assessment (RHA) carried out every 6 months if under 5 years of age, or annually if 5 years old or over. These are usually carried out by one of the specialist nurses in our Children in Care health team or by the child's health visitor or school nurse and may be completed at home. Each health assessment generates a health care plan with actions which should be reviewed regularly in care team meetings.

At 17 years old, all young people in care are offered a leaving care health passport which summarises their health history and any known outstanding health needs. It also contains health promotion information and signposting to health services.

Input from the Children in Care nursing team is available until a young person leaves care. Following that, they can signpost a young person to appropriate services as needed.

The Children in Care health team are available to support with health queries from carers, social workers or YP between health assessments.

Child Development Clinic

Pre-school children with concerns regarding social communication, including autism and children with complex and multiple developmental needs (including genetic disorders), are referred to the Child Development Clinic (CDC). They are seen by a multidisciplinary team including a paediatrician, SALT and Physiotherapist. Referrals are made via the 0-4 panel and can be made by the 0-19 service, nursery or paediatrician. Whilst waiting, children may access support from services outside of Paediatrics e.g. Education, 0-19, SALT, OT, Physio and other.

Bladder and Bowel Service

The Children's Service (0-19 years old) will undertake a comprehensive bladder and bowel assessment and provide a treatment programme which is tailored to suit an individual's needs. To access the service, children and young people must be registered with a Gateshead GP and require level 2 bladder and bowel support. Referrals can be made by Health Visitors, Community Nursing Team, GPs or any other professionals involved in their care.

Children and Young People's Services (CYPS) and Adults' Mental Health Services (AMHS)

Children and Young People's Service - Newcastle and Gateshead, Benton House - CNTW164 - Cumbria, Northumberland, Tyne and Wear NHS Foundation Trust

The Children and Young People's Service provides a single service to all children and young people aged 5-18 years living in Gateshead who present with mental health difficulties. This includes children and young people who may be living in difficult and challenging circumstances.

The Child and Young People's Service (CYPS) within CNTW (Cumbria, Northumberland, Tyne and Wear NHS Foundation Trust) has a structured process to support young people transitioning from children's mental health services to adult mental health services (AMHS). This process is critical to ensuring continuity of care, a person-centred approach, and sustained engagement as young people move into adulthood.

The service is able to provide:

- Assessment, diagnosis, treatment and support on a range of mental health issues.
- A comprehensive transition support package to those young people who are approaching their 18th birthday and may need continuing support as adults.

- Training, consultation, support and advice to front line staff working in targeted services for children.



[Click here](#) for support whilst waiting for a neurodevelopmental assessment.



[Click here](#) for advice when moving on to Adult Mental Health Services.

Referrals will be accepted from any professional working with you or your family, and self-referrals can also be made. Referrals are accepted in written form by letter, email or by telephone.

0191 246 6913 or freephone 0800 652 2864
NGCYPS@cntw.nhs.uk

Community Link Workers

Lots of patients who go to the doctors have problems that the GP can't solve with a tablet. Maybe they have issues with their housing, benefits, relationships, or something else. Sometimes these things are making them feel anxious, stressed, or impacting on their health in different ways.

Through our Community Linking Project we try to sort out the problems that are causing the issue by listening to patients, helping them to overcome their problems, and linking patients to services in the community that can help.

We currently have Community Link Workers in twenty five surgeries across Gateshead.



Mental health support

The Designated Clinical Officer

The Designated Clinical officer (DCO) acts as a point of contact for parents/carers, partner agencies and professionals to raise queries and concerns related to the NHS health service and SEND activities. **To contact the DCO call 07342081199 or email dawn.robson4@nhs.net.**

Signposting and Advice

Prevention & Early Intervention

- Family Hubs
- Autism
- 0-19 Service
- Storm Break - School Training
- Kooth
- STSFT CYP Primary Care Mental Health Team
- Community Mental Health Grant Pilots
- Blue Cabin - Supporting Care Experienced Young People
- Young Women's Outreach Project - Peer Research
- Youth Focus North East - Safe Place

Mental Health Teams in Schools (The Children's Society)

Getting Help

- Children North East
- North East Counselling
- Emotional Wellbeing Team
- Barnados
- Kooth
- Kalmer Counselling
- Eating Distress North East 16+
- Talking Therapies 16+
- School Social Workers

Giving Children and Young People the Best Start in Life

Getting More Risk help

- Early Intervention Psychosis Disorder Team (CEDS)
- At Risk Mental State
- Forensic Child and Adult Mental Health Services
- Criminal Justice Liaison and Diversion
- Specialist Perinatal Community Team
- CYP Community Eating
- Secure Children's Homes
- Inpatient Wards (Mental Health, Learning Disability, Eating Disorder, Psychiatric Intensive Care Units)
- Low and Medium Secure Hospital Wards
- National Deaf Inpatient Unit

Trusting Hands Gateshead (CNTW)

Getting More Help

- CYPS Mental Help Team
- CYPS Neurodevelopmental Team
- CYPS Learning Disabilities Team
- Tyneside MIND- Traumatic Death Pilot
- North East Counselling - YJS
- Psychiatric Liaison
- Universal Crisis Team
- Community Treatment Team

The AFC-Tavistock Model for CAMHS, November 2014

Social Prescribing

www.gatesheadouterwestpcn.nhs.uk



It is thought that up to one in five GP appointments is about a wider issue than just health. While GPs are of course experts in assessing and treating a huge range of medical issues, they are not always best placed to know where people can find support for non-clinical matters.

Social Prescribing fills that gap. It is about helping people with the non-medical issues that impact their general health and wellbeing.

What form this takes depends on the specific needs of each person, and a big positive is that Social Prescribers (sometimes also called Link Workers) have the time to fully understand what matters most to each person, and how to help them achieve what they want.

Most often, this will involve putting together a plan that supports and empowers people to be able to make changes for themselves. It may be that the person is having problems with housing, debt or struggling to find work. A Social Prescriber may then find local organisations and create a link between the patient and the people that can help.



Sexual Health

www.gatesheadsexualhealth.co.uk



Contact: 0191 2831577

Gateshead Sexual Health Services: Trinity Square Health Centre NE8 1AD

Gateshead Sexual Health service provides rapid, open access to free confidential integrated sexual health care delivered from a centrally located clinic in Gateshead at Trinity Square Health Centre and a clinic at Blaydon Primary Care Centre. The service supports young people and adults aged 13+.

The **Trinity Square Health Centre** has extended clinic opening hours from 8.45am until 7pm Monday to Friday.

The **Blaydon Primary Care Centre contraception clinic** operates every Thursday & Saturday morning between 9am – 12pm.

Gateshead Sexual Health offer services at suitable times for young people after school, college or home learning and also offer extended appointment times for people with learning disabilities, adapting services to meet the needs of everyone. Gateshead Sexual Health can be accessed by people of all ages, genders and orientations and areas of residence to ensure equal and inclusive access for all attending local Sexual Health services.

The service operates a telephone appointment system and provides the following services:

- STI Screening, Testing and Treatments.
- All forms of contraception including emergency contraception and advice on safer sex.
- Pregnancy options advice (including referral to termination services).
- Outreach services: Specialist outreach nurse for vulnerable people and those experiencing access issues in community settings .

- Support for those who have been sexually assaulted.
- Access to Psychosexual counselling.
- Online offer for home testing kits for sexually transmitted infections and online access to free condoms.

Referrals are accepted from professionals working with young people and adults as well as individuals contacting the service direct.

Referrals from professionals are accepted either by telephoning **0191 2831577** or by emailing the **Gateshead Sexual Health Professional Referral inbox:** stsft.sexualhealthreferrals@nhs.net

Individuals should call 0191 2831577.

Please be advised when making a professional referral on behalf of a young person or adult in your care, please state:

- Name of referrer and agency you are from
- A contact number and email address you would like to be contacted on
- Reason for referral and any additional information to help support

Click the links below to download and complete the referral form and download Gateshead Sexual Health Service information:



Digital Referral direct to Gateshead Sexual Health: <https://tinyurl.com/34suz68j>



Gateshead Sexual Health Offer: <https://tinyurl.com/3kc56p6m>



Gateshead Contraceptive Offer: <https://tinyurl.com/3dc5392z>

Therapy Services

- SALT - Speech and Language Therapy
- OT - Occupational Therapy
- Physio
- B&B
- Children's Community Nursing

GP

A GP provides services to people of all ages, including children and young people. You often need a GP's referral to access other specialised NHS services.

People over 14 who have a learning disability are entitled to an annual health check with their GP practice.



www.nhs.uk/conditions/learning-disabilities/annual-health-checks/

NHS Continuing Healthcare

Some people with long-term complex health needs qualify for free health and social care arranged and funded solely by the NHS. This is known as NHS continuing healthcare.



[NHS continuing healthcare - Social care and support guide - NHS](#)

NHS continuing healthcare is for adults. Children and young people may receive a "continuing care package" if they have needs arising from disability, accident or illness that cannot be met by existing universal or specialist services alone.

Paying for Healthcare Post-18

Things people may be expected to pay for as an adult:

- Dental costs
- Prescriptions



[Click here](#) to check if you're eligible for help | NHSBSA (NHS Business Services Authority)

Sexual Safety



[Child Sexual Abuse - Parents and carers \(ages 5-11\).pdf](#)



[Child Sexual Exploitation - CSE - Parents and carers \(ages 11+\).pdf](#)

Useful links:



[Understanding Sexual Behaviour in Children | NSPCC](#)



[Helping My Autistic Child Stay Safe Online - Ann Craft Trust](#)



[Love Life: resources for young people with learning disabilities | NSPCC Learning](#)



[Are you a deaf young person? - SignHealth](#)

Positive Futures Gateshead - Young People's Drug and Alcohol Service

Positive Futures is a free and confidential drug and alcohol service for young people and concerned others in the Gateshead area.

As a service, they provide friendly support around drugs and alcohol, alongside offering a provision for parents, carers and professionals who work with young people in Gateshead.

The support they offer as a service is both flexible and accessible, and people can refer in through their website using their online referral form here:



www.changegrowlive.org

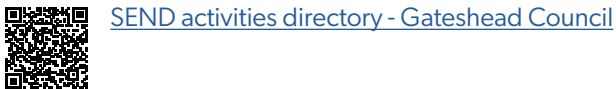
You can also call 0191 4601354 or email gatesheadyp@cgl.org.uk.

Positive Futures also offers support to children and young people who have been affected by a parent/carer/sibling's drug and alcohol use. They provide a safe space to talk about experiences, learn more about addiction and explore ways to manage big feelings and emotions safely.



Community Inclusion

SEND Activities Directory



The SEND activities directory has been developed to provide free and impartial information to families about activities suitable for those with SEND within the local and surrounding area and offered online.

Gateshead Network of Children with Disabilities



The Gateshead Network of Children with Disabilities is an information service for families with disabled children. Members receive free leisure cards and Max cards, which can be used at lots of leisure attractions in the Gateshead area.

If you would like to become a member you can register online or contact them by email or phone.

Once we receive your completed membership form, we will securely and confidentially record your contact details so we can keep you informed about events and services which may interest you and your family.

MAX Cards

A Max Card is the UK's leading discount card for foster families and families of children with additional needs.



For further information and details of where the Max Card can be used, please visit My Max Card <https://mymaxcard.co.uk>.

Leisure



[Leisure - Gateshead Local Offer SEND 0 to 25 years.](#)

Please see information on the Local Offer about leisure facilities.

Further information is available in the SEND activities directory.



Gym Possible



[Homepage - Gym Possible](#)

Gym Possible is the North East's FIRST gym specifically designed for wheelchair users. It costs £20/month. It is fully accessible with specialist equipment. It is in Gateshead Active Leisure centre.

Call 01914062421 or [email here](#) for further information. www.gympossible.co.uk

Libraries

Gateshead Libraries membership is free to all and everyone is welcome in our libraries. To borrow books or use our computers you will need to join the library. You can borrow up to 20 physical books and e-items such as e-books and e-audiobooks at any one time.

Our Libraries are welcoming spaces with friendly staff hosting a wide range of accessible services for young people. Gateshead Libraries host lots of inclusive activities for young people including after school library clubs such as Anime Club, Dungeons and Dragons, Pokemon, Minecraft, Readers Groups, Coder Dojo, and Code Club.

All of our libraries are wheelchair accessible and have disabled toilet facilities.

A wide range of additional activities are on offer in school holidays linking to all of the above clubs and there are many digital activities too.

We also offer:

- Customised library and school visits.
- Fidget toys to use in the library.
- Imaginary stories: sensory stories in schools and community centres.
- Work placements for young people.



Family Support

Start for Life Offer



Useful websites for parents to be and new parents/carers about pregnancy, birth and early life. [Gateshead_Start_for_Life_Offer\(1\).pdf](#)

Family Hubs

There are 9 Family Hubs in Gateshead, providing walk-in support for families with children of all ages, including groups and activities for children aged 0-5 years and support for parenting, relationships and adult mental health. Family Hubs are co-located with a wide range of services and provide advice on managing a low income, social/peer support opportunities, holiday programmes and sensory facilities.

A growing element of the offer is support for early language development and specific activities/sessions for fathers and male carers to spend quality time with their children. Hubs can help connect families to other services and are a safe, friendly space to see a wide range of practitioners, including health visitors, community midwives, parent outreach workers and mental health professionals.

Family Hub staff also provide support in up to 12 community outreach locations throughout the borough.

For more information, please contact: 0191 433 6310, familyhubs@gateshead.gov.uk.

Healthy Relationships Pathway

A wide range of group parenting and relationship programmes are available to Gateshead families. These include programmes to develop parenting skills for raising children of all ages – from pre-birth to the teenage years – and includes the (Parents Plus) Children's ADHD Programme.

The Pathway also provides support for couples and co-parents experiencing distress in their relationship, including counselling and group support options to help parents communicate effectively and/or to minimise the impact of separation on children.

For more information, please contact:
0191 433 5129 parenting@gateshead.gov.uk.

Early Help - Targeted Family Support

Families with multiple needs can access help from a Targeted Family Support (TFS) Family Intervention Worker where more intensive support is required to manage a safe, stable and healthy family life.

Typically, families supported by TFS will have received an Early Help Assessment (EHA) and a multi-agency support plan will be in place to help the family work alongside services in a clear, joined-up way.

Volunteering



www.ourgateshead.org/ways-to-help

Are you looking for a volunteering opportunity, but aren't sure where to start or perhaps you need some additional support? Supported Volunteering can assist young people with any additional needs to find a volunteer role for them.

Youth Participation



Gateshead SEND Participation strategy
- video, guide and easy read guide.
www.gateshead-localoffer.org



SEND Youth Forum



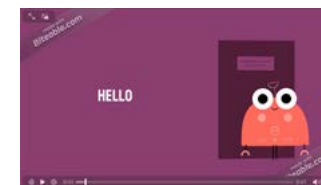
www.gateshead.gov.uk

Do you want to have a say in how we support children and young people with additional needs in Gateshead?

If you are 12-25 years old and have an interest in improving the lives of local young people with additional needs, you can get involved with Gateshead Council's SEND Young People's Forum.

The Forum meets regularly throughout the year and is part of the wider Gateshead SEND Children and Young People's Network.

If you'd like more information about joining the forum, contact alexthompson@gateshead.gov.uk.



<https://gateshead-localoffer.org/wp-content/uploads/2021/10/Gateshead-SEND-Youth-Forum.mp4>

PCF Membership Form



www.gatesheadparentcarerforum.co.uk/join-us

Gateshead Parent Carer Forum is an organised volunteer group of parents and carers of disabled children and young people who have a variety of special educational needs and disabilities living across the Gateshead borough.



Our aim is to support parents and carers of children and young people with SEND in our community. We do that by coming together in a relaxed atmosphere, having a drop in coffee morning, information sessions with invited speakers and training events.

Further Support



Citizens Advice

Citizens Advice provides advice and information that you can trust. Their support is free and impartial. Advisers help figure out the best things for you based on what you need.

They have a new service for people living with neurodiversity.



Find out more here:

<https://citizensadvicegateshead.org.uk/services/living-with-neurodiversity/>

Autism Hubs

Gateshead Autism Hubs parent support groups are for parents and carers of children who display traits associated with or have a diagnosis of autism.

These sessions will provide a safe space for parents and carers to meet others in a similar situation and provide the opportunity for peer support, enabling parents to

support each other, share experiences and ideas. These groups are facilitated by a Gateshead Autism Hubs team member. The aim is to provide a supportive and empowering environment for parents and carers.

Parent support groups are designed to be relaxed and informal, providing you with the opportunity to meet other parents/carers in similar situations and discuss any topics or situations that you might be finding challenging, as well as sharing positive stories, top tips, strategies and information. A member of the Gateshead Autism Hubs team will always be present at these drop-ins to provide support and to facilitate the group.

Some sessions take place face-to-face and some take place online.

For further details of all upcoming sessions please click on the link below to see up to date flyers containing details of the drop-ins available. Drop-ins are during term time only.



Please click here to book a space onto the virtual support sessions.

www.daisychainproject.co.uk

Family Information Service

Gateshead's Family Information Service offers free, confidential and impartial advice and guidance to parents and carers on childcare (registered and un-registered) and early years services in Gateshead, free entitlement to early years provision and about childcare settings that have experience in offering services to children with special educational needs and disabilities.

For more information phone 0191 433 5118 or email fis@gateshead.gov.uk.

SENDIASS

The Gateshead SENDIAS Service offers free impartial, confidential information and advice for parents and carers with children and young people aged 0-25 years old with special educational needs or a disability and advice and information for young people 16-25 years old with special educational needs or a disability. Gateshead SENDIAS Service is managed by the Barnardo's Disability and Inclusion Support Service.

Gateshead SENDIASS knows that a transition in Education, whether that be to Primary, Secondary, or Post-16, may be a challenging yet exciting process for Children & Young People with Special Educational Needs and/or Disabilities (SEND). Transition can also be between key stages and also school moves in year, for example when a family moves house and a child moves school.

It is important to plan and prepare for transition as part of a child or young person's special educational needs and disabilities (SEND) support. They should be planned for as early as possible so that all relevant information can be shared to prepare the new school or setting. **If a parent or carer is feeling concerned about a future transition, they can ask their child's school or setting for a meeting to discuss this and to identify any planning and support that is available. If a parent or carer is finding preparing for this meeting difficult as they have additional needs themselves, SENDIASS can help a parent/carer prepare for the meeting.**

Further information can be found about transitions on our website in our useful information section.



[Gateshead SENDIASS | Barnardo's \(barnardosendiass.org.uk\)](http://barnardosendiass.org.uk)

SEND Support for Young People in Gateshead



Are you a parent or carer of a child or young person who has special educational needs and /or disabilities (SEND)?

Do you know where you can access support or advice to ensure your child's needs are being met?



The **Local Offer** is a website that shares the help you can get if you have SEND or if you care for someone who does. It is for people from 0 to 25 years old. It has information about different services, e.g. education, health, and social care, and how to use them. It also lets you share your opinions and see what other people think.



Parent Carer Forums are groups of parents and carers of children and young people with SEND who work together to improve local services and support. They provide information and advice, gathering and sharing feedback, working in partnership with decision-makers, offering peer support and networking and helping with rights and appeals.



Would your teenager like to be involved with the SEND Youth Forum?

It is a group of young people with SEND who meet regularly to share their views and experiences, and to work together to improve the services and support for young people with SEND. They also have fun, make friends and learn new skills. A SEND Youth Forum is a great way to have your voice heard and make a positive difference in your community.



Special Education Needs and Disabilities Information and Advice and Support Services (SENDIASS) is a free and confidential service for parents, carers and young people with SEND. It helps them to understand and exercise their rights, and to access the right provision for their needs. It also supports them with SEND Tribunal appeals.



Gateshead Autism Hubs is a free service in Gateshead that provides information, advice, and support to parents and caregivers of autistic children and young people aged 0-25. They help with various challenges that can affect autistic individuals and their families. A diagnosis is not necessary to receive support. The team offers drop-in sessions, learning opportunities, peer support and guidance throughout Gateshead.



The **Designated Clinical Officer (DCO)** – Acts as a single point of contact for parents/carers, partner agencies and professionals to raise queries and concerns related to NHS health services and SEND. To contact, email dawn.robson4@nhs.net or nencicb-ng.sendhealthteam@nhs.net, or telephone 07342081199.

The **Designated Social Care Officer (DSCO)** – Acts as a point of contact for parents/carers, partner agencies and professionals to support the resolution of queries and concerns related to the quality and interaction of Early Help, Social Care and SEND services. To contact, email [taraodonnell@gateshead.gov.uk](mailto: taraodonnell@gateshead.gov.uk), or call 0191 433 3826.

Useful Acronyms

AP	Alternative Provision	EP	Educational Psychologist	PCF	Parent Carer Forum
AMHS	Adults' Mental Health Services	EY	Early Years	PfA	Preparation for Adulthood
ARMS	Additionally Resourced Mainstream School	EYFS	Early Years Foundation Stage	PHN	Public Health Nurse
ASC/D	Autism Spectrum Condition/Disorder	GATES	Gateshead Access to Employment Services	PIP	Personal Independence Payment
BSL	British Sign Language	GCSE	General Certificate of Secondary Education	PMN	Physical and Medical Needs
CAMHS	Child and Adolescent Mental Health Services	GP	General Practitioner	PRU	Pupil Referral Unit
CDC	Child Development Clinic	HI	Hearing Impairment	QFT	Quality First Teaching
C&L	Cognition and Learning Needs	HINT	High Incidence Needs Team (CSC, SLCN, C&L, SEMH)	RHA	Review Health Assessment
CLDD	Complex Learning Difficulties and Disabilities	HLTA	Higher Level Teaching Assistant	SalT	Speech and Language Therapy
CSC	Complex Social Communication (including autism)	IHA	Initial Health Assessment	SCPHN	Specialist Community Public Health Nurse
CNTW	Cumbria, Northumberland, Tyne and Wear	IRO	Independent Reviewing Officer	SEMH	Social, Emotional and Mental Health
CYP	Child or Young Person	LA	Local Authority	SENDCO	Special Educational Needs and Disabilities Co-ordinator
CYPS	Children and Young People's Services	LINT	Low Incidence Needs Team	SEND	Special Educational Needs and Disabilities
DAF	Disability Access Fund	MSI	Multi-Sensory Impairment	SENDIASS	Special Educational Needs and Disabilities Information, Advice and Support Service
DCT	Disabled Children's Team	NatSIP	National Sensory Impairment Partnership	SLCN	Speech, Language and Communication Needs
DfE	Department for Education	NC	National Curriculum	SLD	Severe Learning Difficulties
DLA	Disability Living Allowance	NDTi	National Development Team for Inclusion	TA	Teaching Assistant
DWP	Department for Work and Pensions	NE	North East	TAF	Team Around the Family
EAL	English as an Additional Language	NHS	National Health Service	TFS	Targeted Family Support
ECAT	Every Child a Talker	NHSBSA	National Health Service Business Services Authority	VI	Vision Impairment
EHA	Early Help Assessment	NVC	Non-Verbal Communication	VS	Virtual School
EHCP	Education, Health and Care Plan	OT	Occupational Therapist	YJS	Youth Justice Service
EOTAS	Education Other Than at School				



